

■ Please Read This First

Safety Notice

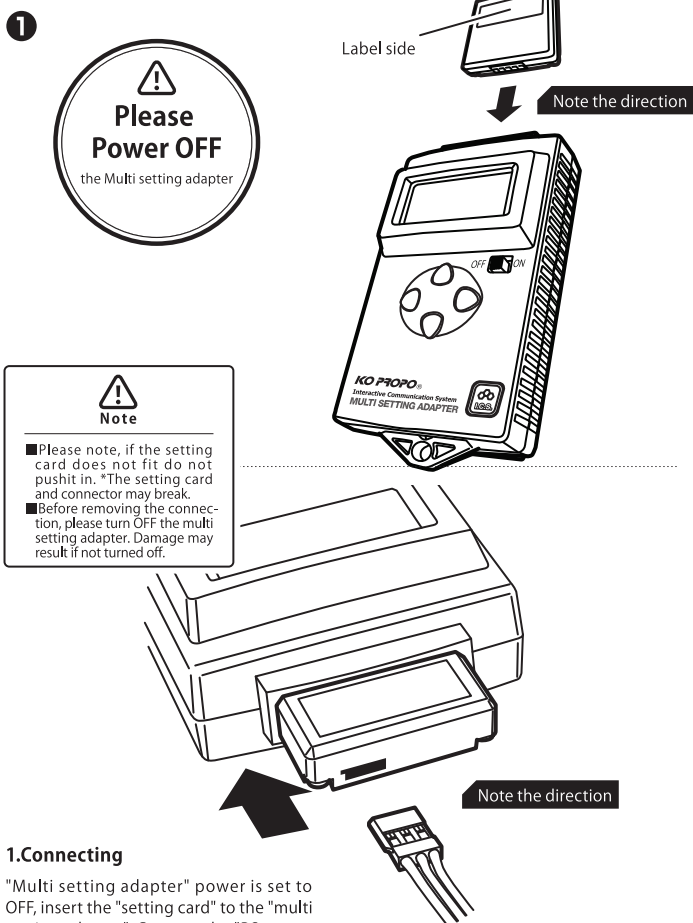
This product uses electronic parts inside that are used as precision equipment. Abuse and mishandling of the product has the danger of leading to an accident, so be sure to protect and handle this correctly as shown and explained in the following display.

- Danger** **Serious injury or death can occur, proceed with caution.** Do not try to alter the electronic device. *Breakdown, electric shock or fire may result. Repairs should only be performed by our service department. This product is used to configure the RSx series of servos when combined with our setting adapter (sold separately). Please note that this can only be used these products. *If used for any other product, damage will occur.
- Warning** **Substantial damage can occur and serious injury or death are a possibility.** If the smell of smoke is released or becomes abnormally hot, please stop using the product and remove the batteries from the multi setting adapter at once. If product gets wet from chemicals, solvents, etc. or there is deformation of the case, please discontinue use.
- Note** **Possibility or substantial damage may occur due to an accidental mistake.** Do not insert any foreign materials into this product. *Injury and substantial damage due to ignition and heat generated may result. Do not leave in a place where there is high temperature. *When the temperature becomes high (above 60°C), the case may deform and cannot be used. Hard impact or dropping the product may damage the case or electronics, please handle with care.

Our company cannot owe responsibility of the nature of radio control models due to the customer's result of using the product. Please acknowledge this beforehand

■ Reading data from the servo

■ Using a Multi setting adapter



1.Connecting

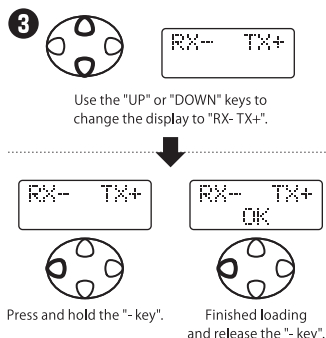
"Multi setting adapter" power is set to OFF, insert the "setting card" to the "multi setting adapter". Connect the "RSx servo lead" to the "setting card".

2.Power ON

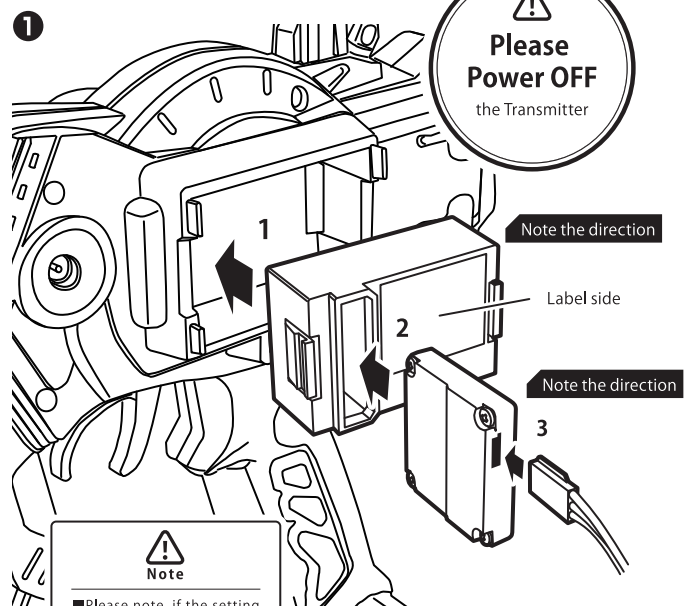
Turn ON the "multi setting adapter".

3.Data Loading

Press the UP or DOWN key on the "multi setting adapter" to change the display screen to show "RX- TX+". Press and hold down the "-" key. The bottom of the screen will display "Wait..." and once "OK" is displayed you can release the "-" key. Reading of the settings has finished loading into the "multi setting adapter".



■ Using a Setting module



1.Connecting

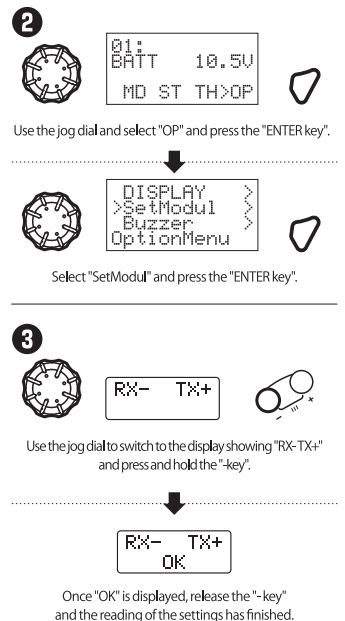
Turn the transmitter OFF. Insert the "setting module", insert the "setting card" and connect the "RSx servo lead".

2.Power ON

Turn ON the transmitter. Using the jog dial on the transmitter, go to the menu display showing "OP" and press the "ENTER Key" on the transmitter. Use the jog dial again and select the function called "SetModul" and press the "ENTER Key" on the transmitter.

3.Data Loading

Using the jog dial, go to the screen that displays "RX- TX+" and press and hold the "-" key. The bottom of the screen will display "Wait..." and once "OK" is displayed you can release the "-" key. Reading of the settings has finished loading.



Write settings to the servo

*You can alter the servo settings through the display. To initialize the settings, you must write (transmit) the settings to the servo.

Using the Multi setting adapter

1. Settings

Read the settings (settings 1-3 will be read) and then change your settings.



Switch to the screen displaying "RX- TX+".



Press and hold the "+ key".

2. Write Settings

Go to the screen displaying "Rx- TX+". Press and hold the "+" key. The upper part of the screen will display "Wait .." and the lower will display the selected model number. Once "OK" is displayed, release the "+" key and the settings will be loaded into the servo.

Using the Setting module

1. Settings

Read the settings (settings 1-3 will be read) and then change your settings.



Switch to the screen displaying "RX- TX+".



Press and hold the "+ key".

2. Write Settings

Go to the screen displaying "Rx- TX+". Press and hold the "+" key. The upper part of the screen will display "Wait .." and the lower will display the selected model number. Once "OK" is displayed, release the "+" key and the settings will be loaded into the servo.

Switching Model

The "RSx Servo" can store multiple models and can be changed using the ICS.

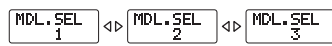
Using the Multi setting adapter

1. Read settings

Read the settings in the servo.



Switch to the screen displaying "MDL.SEL".



Select the model number to using by using the "- or + key".

2. Switching Model

Go to the screen displaying "MDL.SEL" to select the model number you would like to select. Pressing the "- or + key" will change the model selection.

3. Write Settings

Change your settings and then load the settings to the servo.

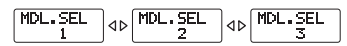
Using the Setting module

1. Read settings

Read the settings in the servo.



Switch to the screen displaying "MDL.SEL".



Select the model number to using by using the "- or + key".

2. Switching Model

Go to the screen displaying "MDL.SEL" to select the model number you would like to select. Pressing the "- or + key" will change the model selection.

3. Write Settings

Change your settings and then load the settings to the servo.

Settings

*The RSx servo functionality may differ from the description in this manual. Please read both manuals.

KO PROPO
RSx Card

Initial screen

New Function Settings

Select Model

Ability to switch between multiple model settings. You can choose from three RSx model settings.

Pulse Stretch (Stretch 1,2)

Ability to adjust the intensity of the holding power around neutral and other than neutral.

Model Copy

Ability to copy settings from the currently selected model number to another model number.

- ①
- ②
- ③
- ④
- ⑤
- ⑥
- ⑦
- ⑧
- ⑨
- ⑩
- ⑪

MDL.SEL
1

Select Model (NEW)

Select the model to use.
The RSx servo has models 1-3 that can be selected.

DSP.SEL
1

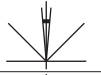
Select Model Editing

Select the model you want to edit.
The RSx servo will allow you to edit the three models.

#STROCH 1
05

Stretch 1 (NEW)

Set the holding power around neutral.
Range: 1-25 (weak=1, strong=25)



#STROCH 2
09

Stretch 2 (NEW)

Set the holding power other than the neutral.
Range: 1-20 (weak=1, strong=20)



#POWER
08

Power (formerly: Speed)

Sets the maximum power of the servo.
Range: 1-8 (maximum: 8)

#PUNCH
05

Punch

Sets the initial movement from neutral while staying linear.
Range: 1-9 (Quickest 9)

#DEAD.B
03

Deadband

Set the width of the neutral.
Range: 1-4 (1 is closer to exact neutral)
(Buzzing from the servo may occur with a smaller value)

#BRAKE
06

Brakes (formerly: Dumping)

Set the characteristics of the servo's stopping holding power.
You can adjust how much holding power the servo has as it moves to a point in the servo sweep.
Range: 1-20 (20 has the characteristics of a sudden brake)

RX-- TX+

Settings read/write

Read or write the settings to/from the setting card.

RESET +-

Model reset

The current model being edited can be reset to the factor default settings. To restore the settings, hold down the "- and + keys". To have this setting take effect, please write the data to the servo.

DSP.COPY
2 - 3 +

Model Copy (NEW)

The settings for the currently select model being edited can be copied to another model number. Once copied, please write the settings to the RSx Servo to be saved.

Example to copy "Model 1"

Hold the "-" key to copy "Model 1" to "Model 2"
Hold the "+" key to copy "Model 1" to "Model 3"

Service Inquiry

KONDO KAGAKU CO.,LTD.

Service Department

4-17-7 Higashi-Nippori, Arakawa-ku
116-0014 Tokyo Japan

Phone:+81-3-3807-7648

Office Hours: Monday~Friday (Except Holidays)

9:00-12:00,13:00-17:00

http://www.kopropo.co.jp