

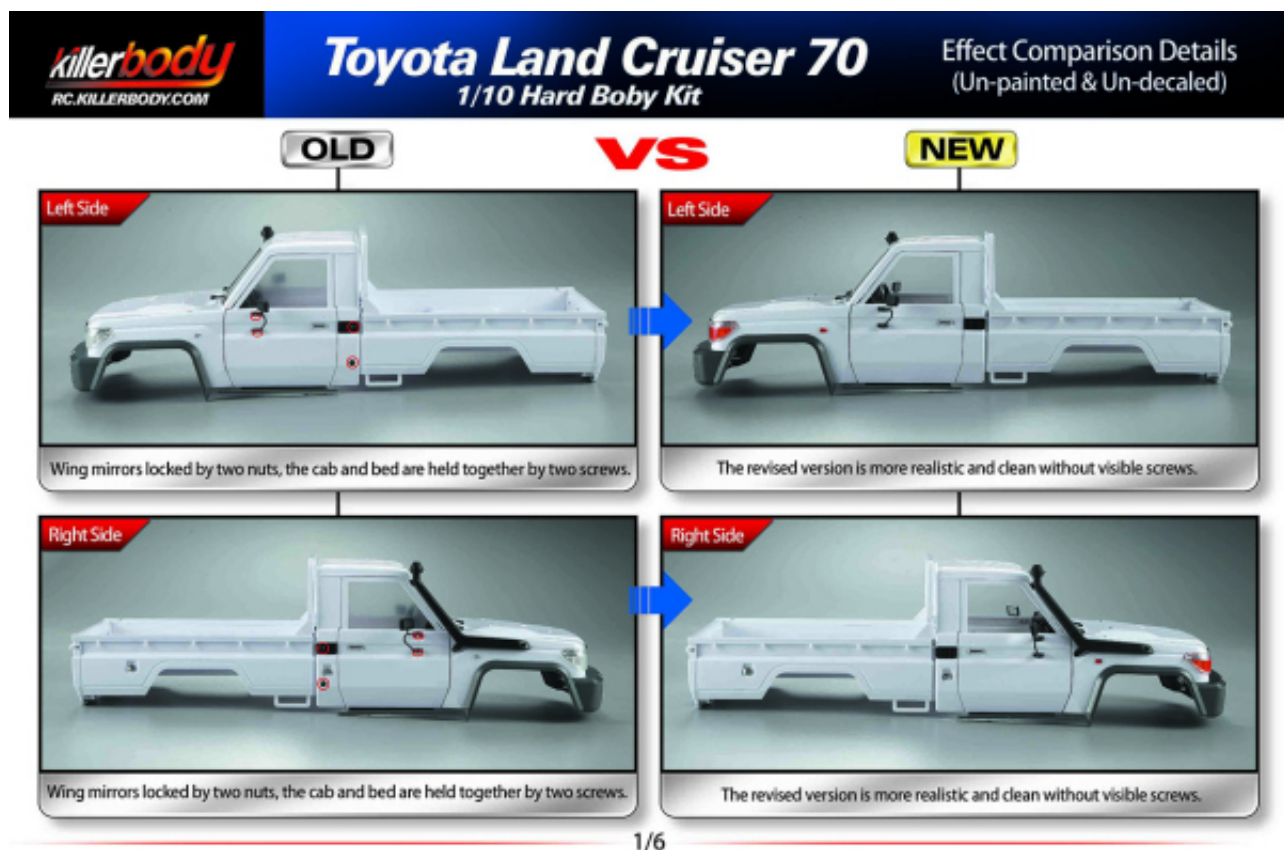
Killerbody LC70 Neue Version 2017

29.05.2017 07:59 von Admin (Kommentare: 0) Killerbody LC70 Version 2017

Killerbody LC70 Version 2017

Die beliebte Killerbody Toyota Land Cruiser LC70 ABS Kunststoff Karosserie wurde neu überarbeitet und in vielen kleinen Details verbessert. Ab sofort ist von uns nur mehr die 2. Auflage der LC70 Karosserie ab Lager lieferbar.

LC70 Vergleich ALT und NEU



Killerbody LC70

OLD

VS

NEW



The front grill is a sealed piece.



The front grill has been improved with open vent holes already molded in, which make it look more realistic and truer.



The washer jet needs to be decorated with black stickers.



The washer jet is improved with two opened holes. On the plastic parts 48601-06, increase two separate black molded plastic pieces instead of black stickers.

2/6

Killerbody LC70

OLD

VS

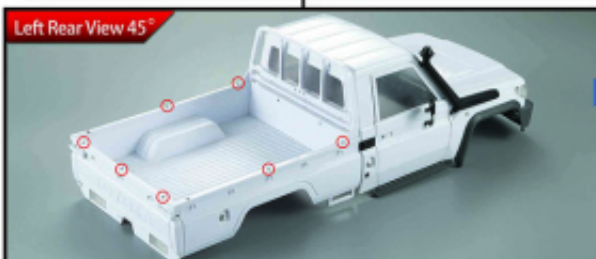
NEW



The washer jet needs to be decorated with black stickers.



The washer jet is improved with two opened holes. On the plastic parts 48601-06, increase two separate black molded plastic pieces instead of black stickers.



There are 9 screws holes that are visible on top edge of the truck bed.



The revised version now has been removed 7 screws holes and retained 2 screws holes, which make it look better.

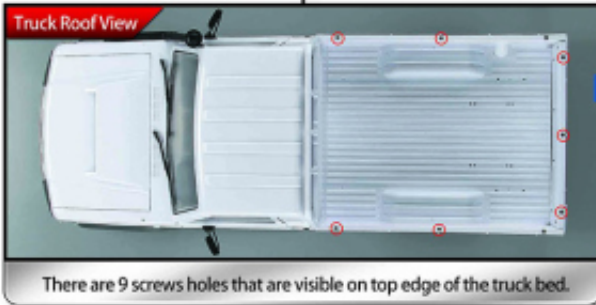
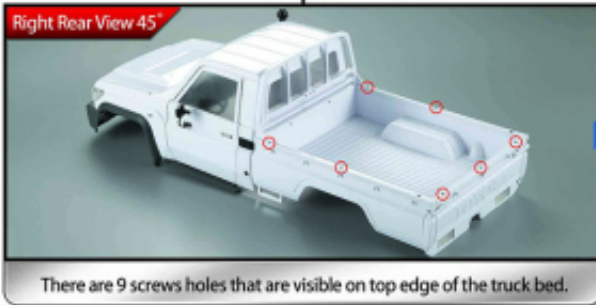
3/6

Killerbody LC70

OLD

VS

NEW



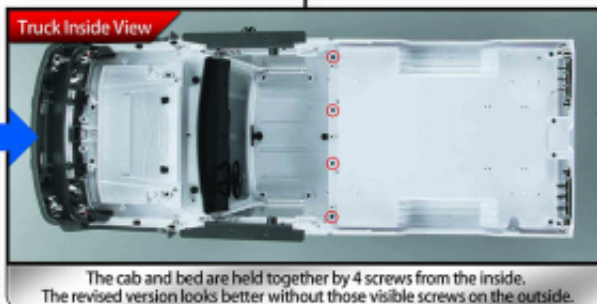
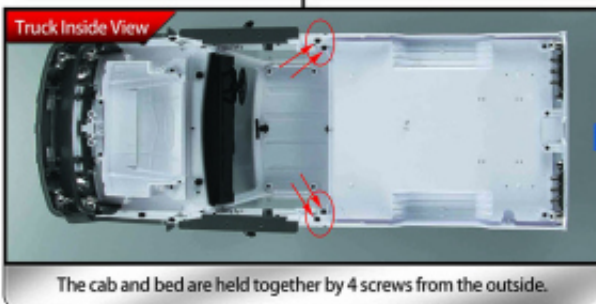
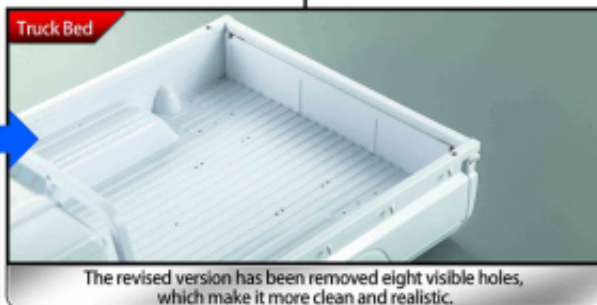
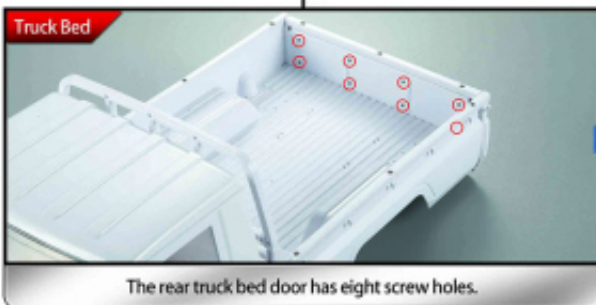
4/6

Killerbody LC70

OLD

VS

NEW



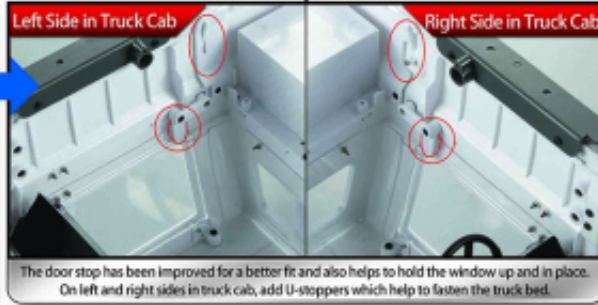
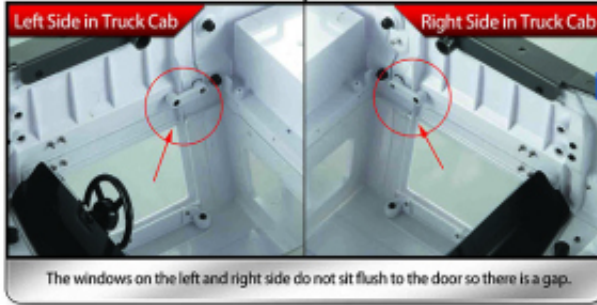
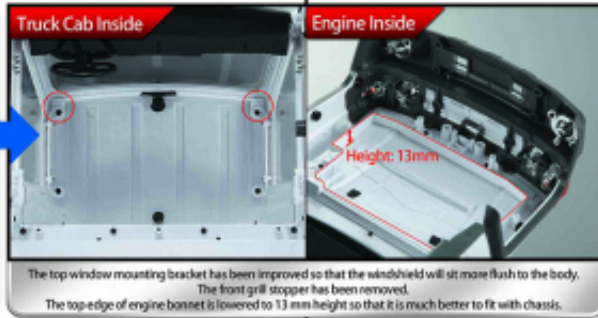
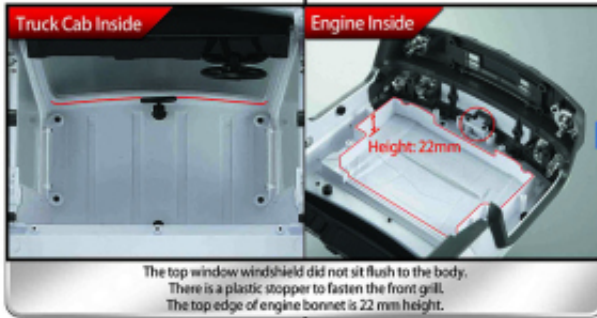
5/6

Killerbody LC70

OLD

VS

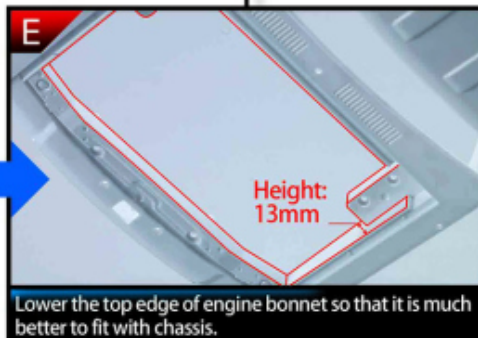
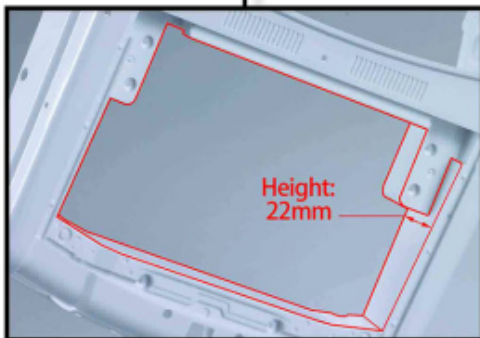
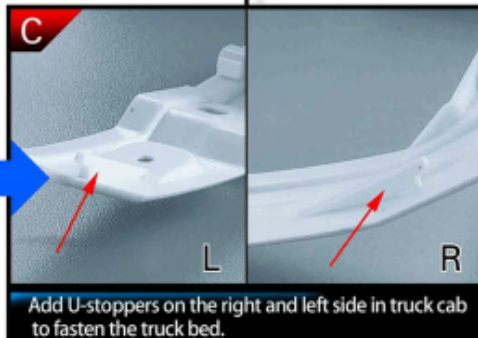
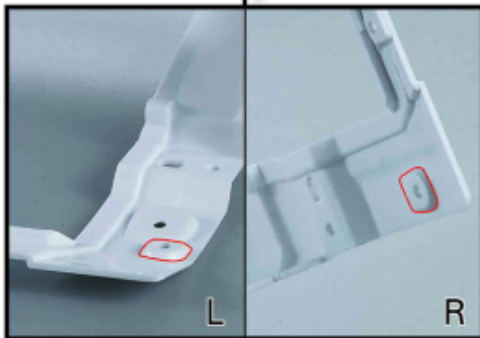
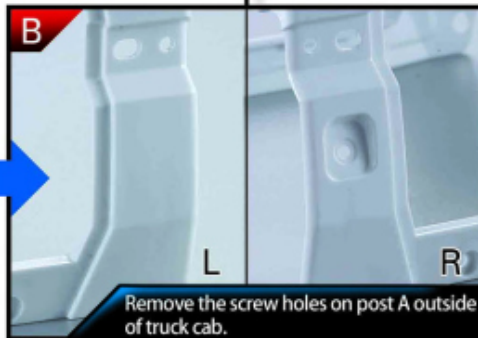
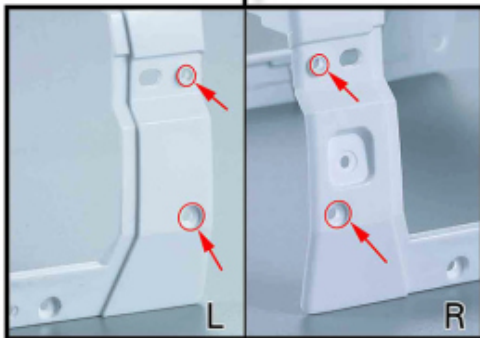
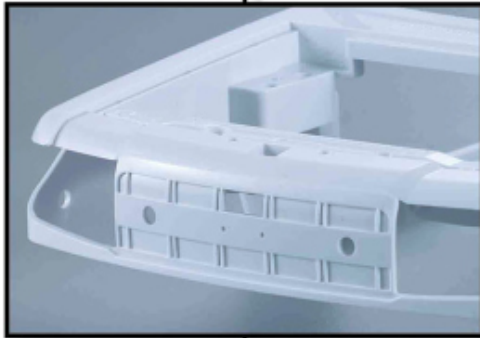
NEW



OLD

VS

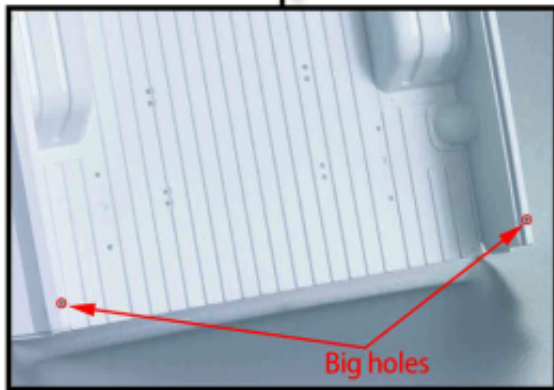
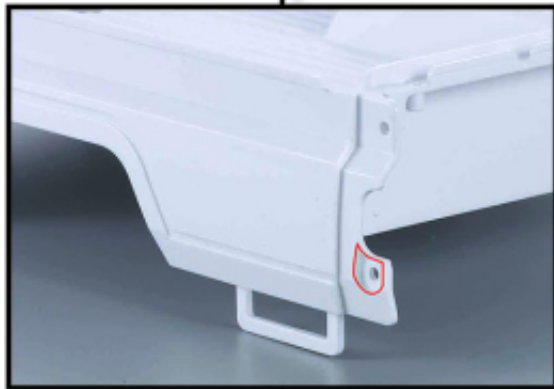
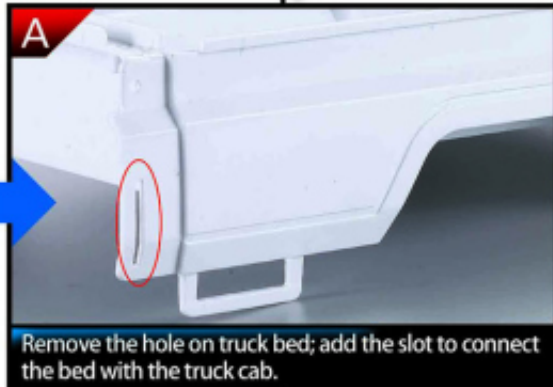
NEW



OLD

VS

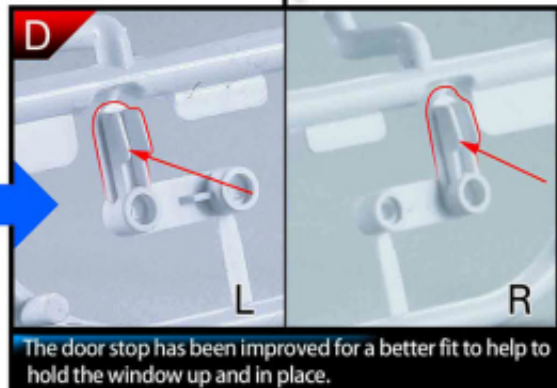
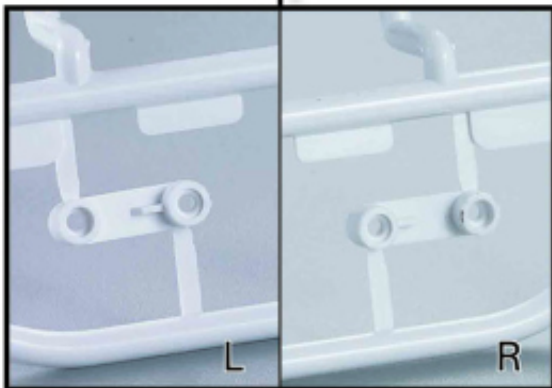
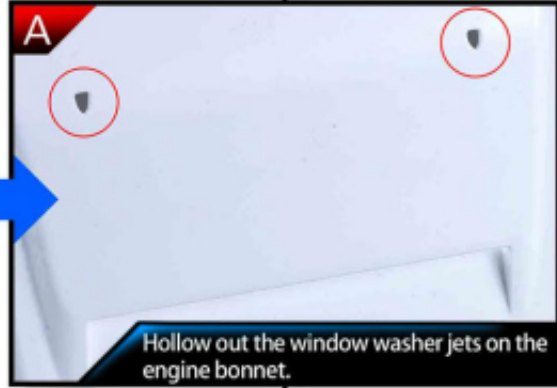
NEW



OLD

VS

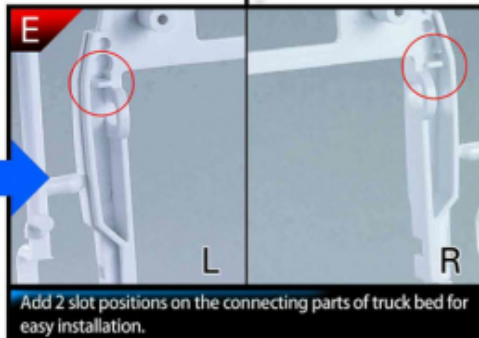
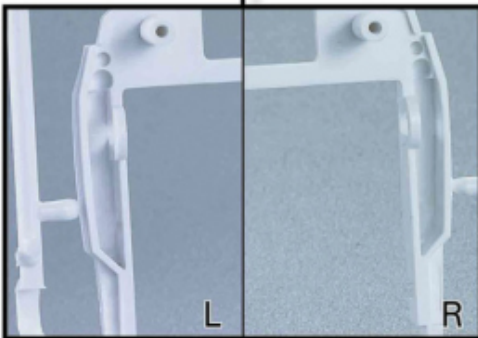
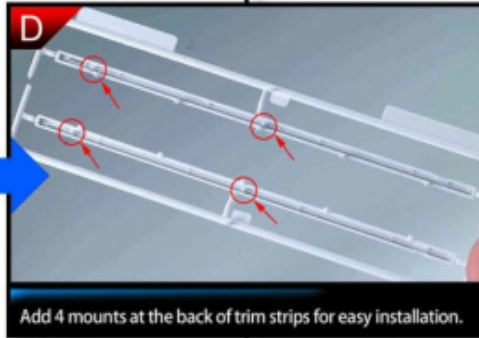
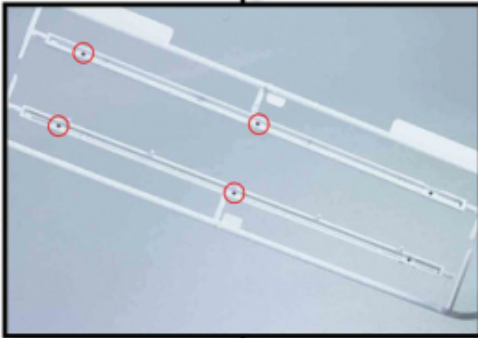
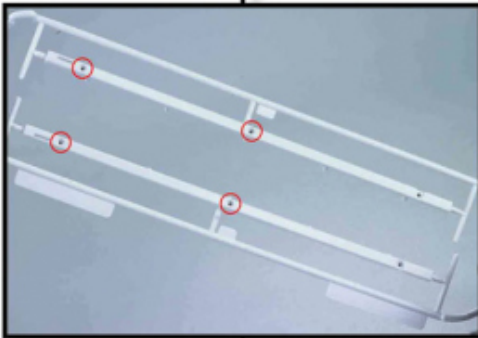
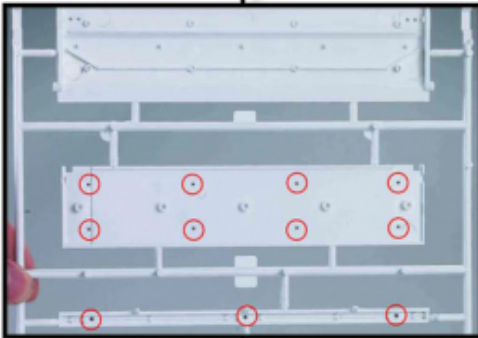
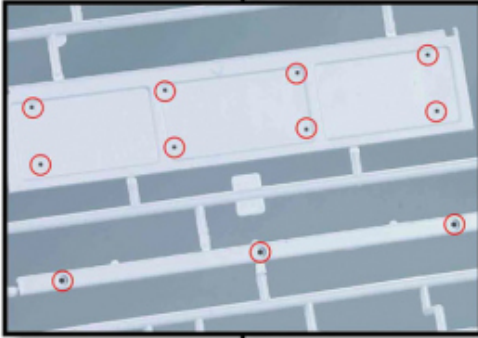
NEW



OLD

VS

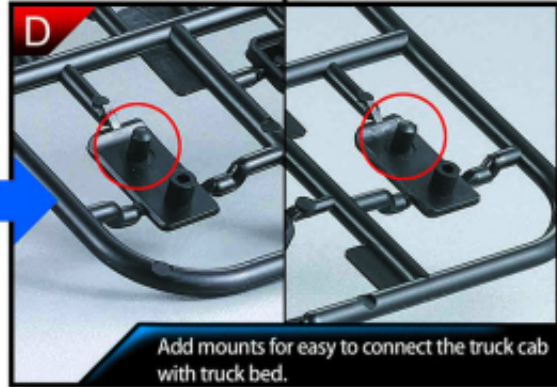
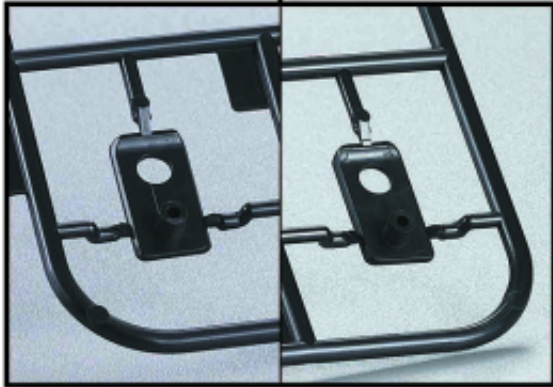
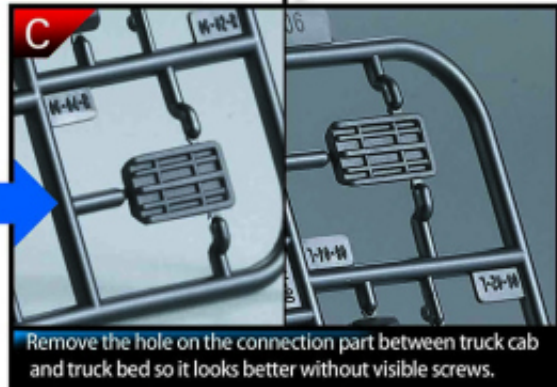
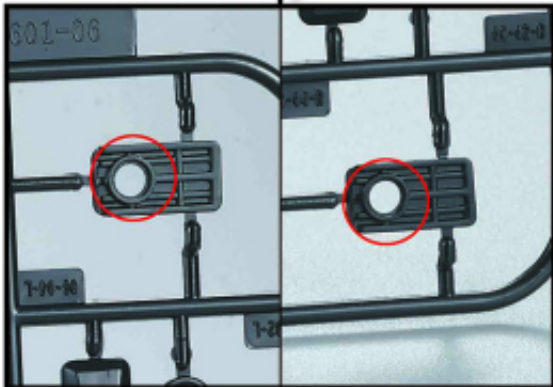
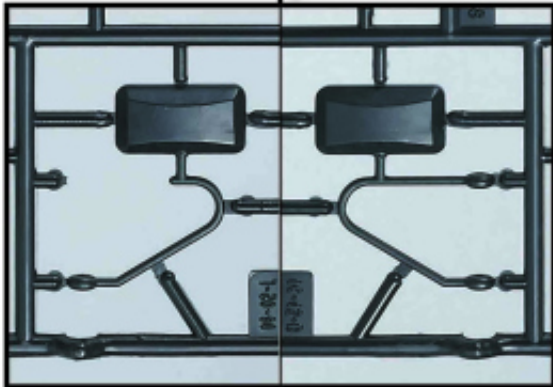
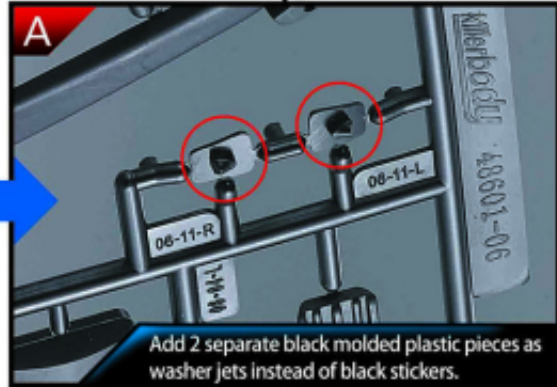
NEW



OLD

VS

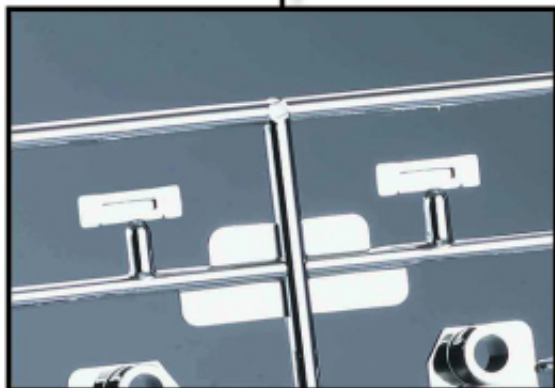
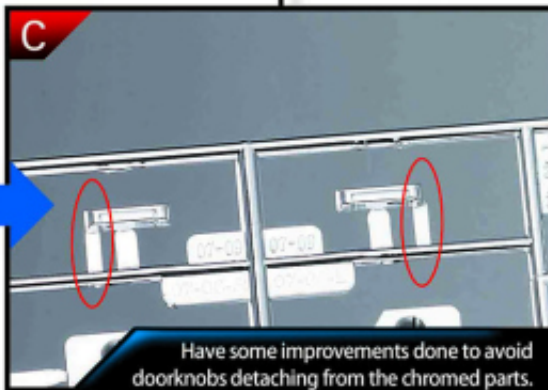
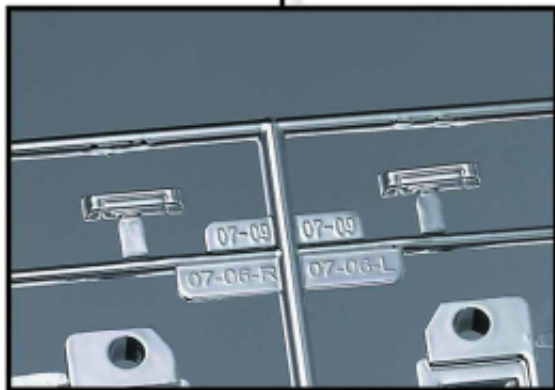
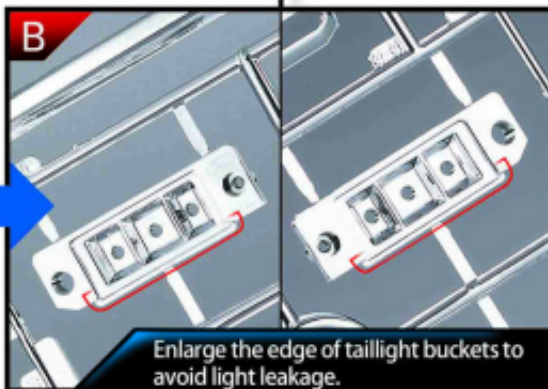
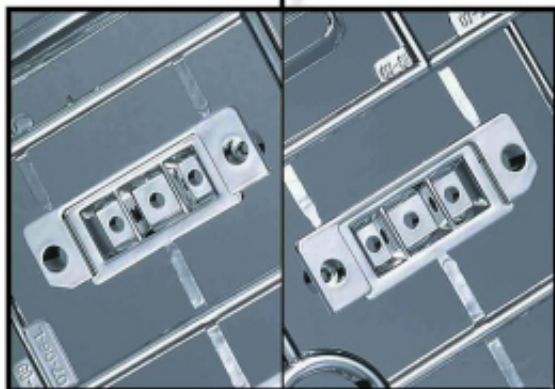
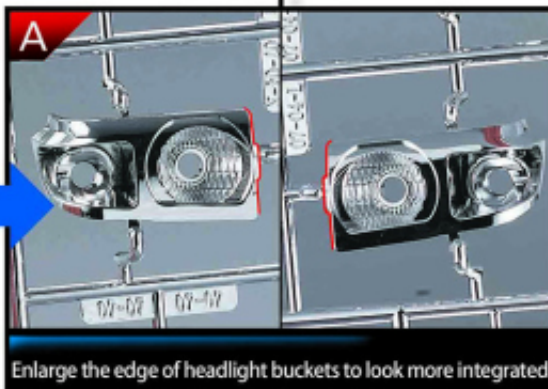
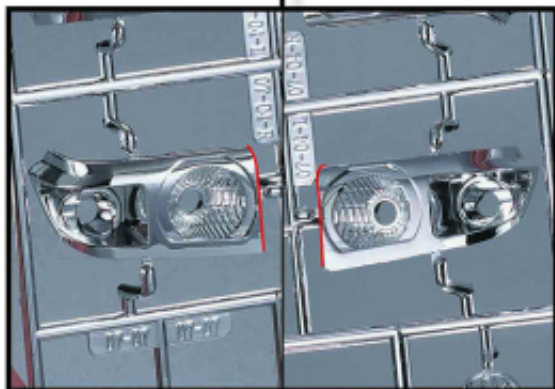
NEW



OLD

VS

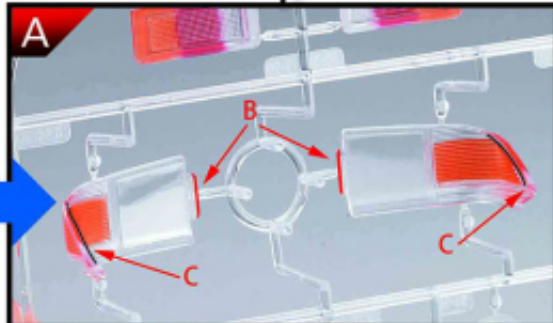
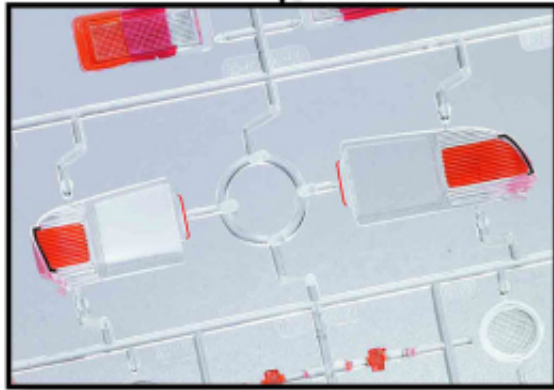
NEW



OLD

VS

NEW



Headlight lenses:
Increase the thickness of B to avoid lenses loosening;
Modify the shape of C to avoid light leakage.