

NC2500 AA/AAA Battery Charger & Analyzer (SK100059)

NC2500



The World's Most Advanced AAA/AA Battery Charger

SkyRC NC2500 AA/AAA Battery Charger & Analyzer is more than just a battery charger which can perform a number of different functions. If you are interested in getting optimum power, turbo fast charging (up to 2500mA Charge Current) and the most battery life possible, this is an excellent choice for you.

The charger has four compartments for AA batteries and four compartments for AAA batteries and it is able to charge both AA and AAA batteries simultaneously. Due to the different capacity, you could set the charge rate accordingly or set all at once. With charging, discharging, refresh & analyze, break-in and cycle functions as well as

individual LCD displays for charging status; this charging unit is reliable, user-friendly and ideal for use in the home, office or on a trip.



All-new Design



Four Independent Slots

Fit both AA and AAA NiMH/NiCd

batteries. Batteries can be

inserted or taken out easily.

Larger LCD display

Larger LCD display with backlit for easy reading.
Digitally display various modes during operation.

Also the charging current (in mA),
accumulated charging capacity (in mAh),
the voltage (in Volt) and time elapsed (in hh:mm)

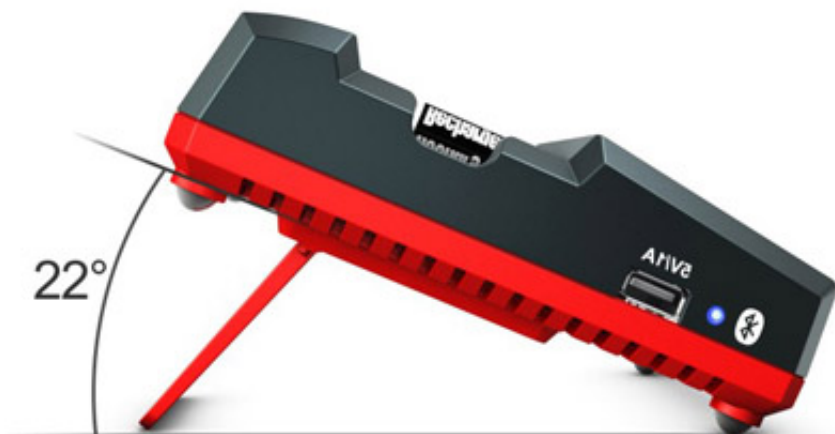


Seven Buttons

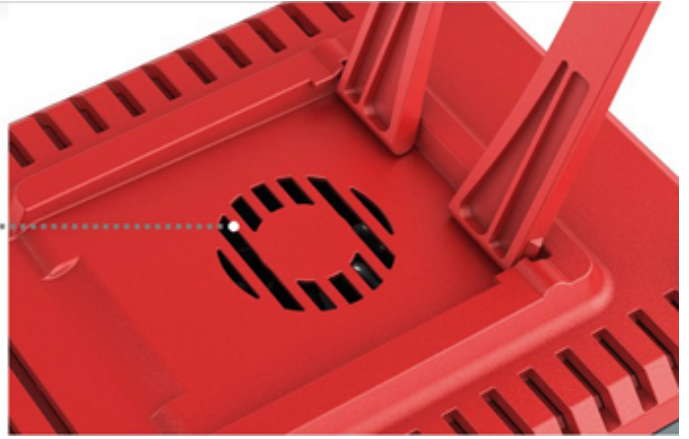
Seven buttons for easy programming and operation.
Four Slot Number Buttons (SNB) to display individual slot operation data during the various operation modes, and other three buttons for programming and operation.

Tilt Stand

It supports the charger stand at different tilt angles and enables the users get best operational experience.



Smart Cooling Fan



Application

Depending on different battery condition, there are five modes of operation:



Charge the battery at the selected rate. Suitable for frequently used batteries.



Discharge batteries at the selected rate.



Suitable for batteries stored for more than 2 weeks but less than 3 month or batteries showing poor performance. This mode can also determine battery capacity for battery matching.



Battery forming is a charge-discharge-charge cycle which forces a full charge into new batteries and those stored for more than 3 month at a very low rate to activate the batteries.



Performs charge-discharge cycles up to 12 times. Cycle mode can remove memory effect from rechargeable batteries.

Protection



Damaged battery detection: To ensure safety, the charger performs an „impedance check“ at the beginning of the program. If the battery fails this test, „FAIL“ would be displayed and the program will be terminated. The built-in PTC thermistor avoids overheating and independent negative delta V eliminates over- and undercharging.

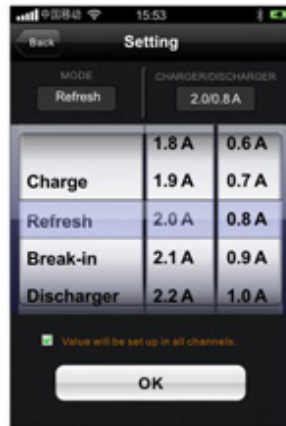
Innovative Bluetooth Talk



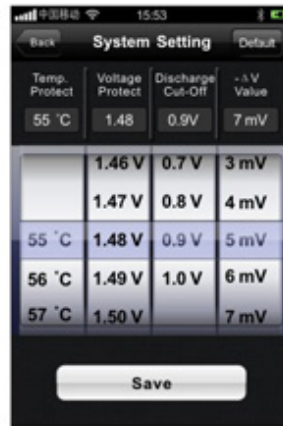
Finally, your charger gets its own APP. You could control this smart charger by your smart phone via Bluetooth. More touch, easy control. Operating this charger on your smart phone with your fingers, you will have best using experience and inter-activity. What's more, you could get more functions (optional Delta Peak Value and Discharger Termination Voltage) and information (battery temp, internal resistance and voltage graphic) in Smart Phone Control Mode.



Homepage shows all charging/discharging data



Setting page - operation mode & charging/discharging current



System setting page



Discharge voltage curve, battery internal resistance & other information



Scan with
your iPhone
to download.




Scan with
your Android
to download.

TECHNISCHE DATEN

	Standard Alone Mode	Smart Phone Control Mode
Charging Current	0.2 - 2.5A	0.2 - 2.5A
Delta Peak	5mV	3-15mV
Discharging Current	0.1 - 1.0A	0.1 - 1.0A
Discharging Termination Voltage	0.9V	0.5V - 1.0V
Battery Capacity Range	500mAh - 3500mAh	500mAh - 3500mAh
No of Cycle	1-12	1-12
Top off Charging Current	100mA	100mA
Maintenance Charging Current (Trickle)	30mA	30mA
Temperature Protection	55°C	55-70°C

	Standard Alone Mode	Smart Phone Control Mode
Input Power	12V / 2.5A	12V / 2.5A
USB Power	5V / 1A	5V / 1A
Weight	370g	370g
Dimensions (LxWxH)	154x104x50mm	154x104x50mm

DOWNLOADS

 [SkyRC Smart Charger V0.9.8 Android App \(2.2 MiB\)](#)