

## B6 mini 60W/6A Balance Charger/Discharger (SK100084)



6 AMP/60 Watt

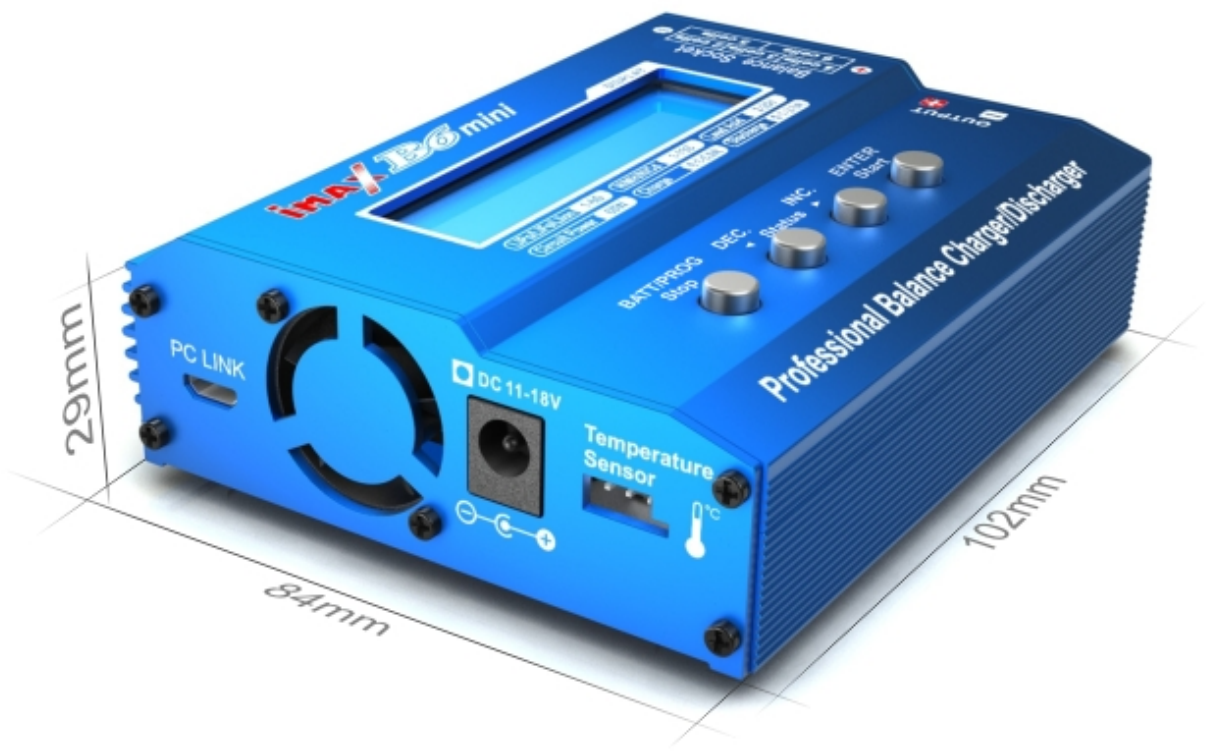
Li-Po 1-6 cell	Li-Fe 1-6 cell	Ni-MH 1-15 cell	Li-Ion 1-6 cell	Ni-Cd 1-15 cell	PB 2-20 cell
-------------------	-------------------	--------------------	--------------------	--------------------	-----------------

SKYRC B6 mini is the small and upgraded version for well-known IMAX B6. Compared with B6, it has new features and functions with its super compact size. Smaller size, bigger power. Compared with B6, the power and charge current are 20% up. Users could connect B6 mini to PC for PC control and firmware upgrade. What's more, users could also use it as Lithium Battery Meter and Battery Internal Resistance Meter.

SKYRC B6 mini is a high-performance, micro processor control charge/discharge station with battery management suitable for use with all current battery types, with integral equalizer for six-cell Lithium- Polymer (LiPo), Lithium-Ferrum (LiFe) and Lithium-Ion (LiIon) batteries; maximum 6A charge current and maximum 60W charge power.

# Compact Design





29mm

84mm

102mm

Max-Pro mini

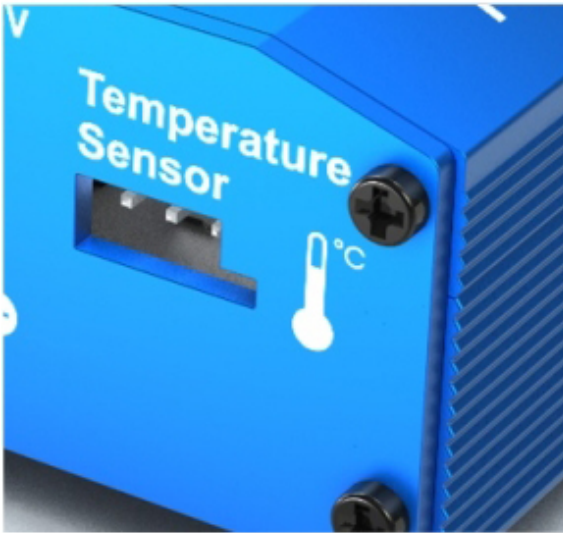
Professional Balance Charger/Discharger

PC LINK

DC 11-18V

Temperature Sensor

BATT/PROG Stop  
DEC. Status  
INC. Status  
ENTER Stop



## Temperature Threshold

If the temperature limit is reached, the process will be terminated.

\*This function is available by connecting optional temperature probe, which is not included in the package.



\* Temperature Probe  
SK-600040

## Built-in Cooling Fan

With cooling fan built-in, it has better heat transfer function.



# Different Charging Modes

LiPo / LiFe  
Lilon Batteries

Normal Charge  
Balance Charge  
Fast Charge  
Discharge  
Storage

NiCd/NiMH  
Batteries

Normal Charge  
Auto Charge  
Discharge  
Cycle  
Re-Peak

PB Battery

Normal Charge  
& Discharge



# Special Features



Lithium Battery Balancer

SKYRC B6 mini employs an individual-cell-voltage balancer. It isn't necessary to connect an external balancer for balance charging.



Program Data Store/Load

The charger can store up to 10 different charge/discharge profiles for your convenience. Users can call out these data at any time without any special program setting.



Battery Meter

The user can check battery's total voltage, the highest voltage, the lowest voltage and each cell's voltage by this charger.

```
BATT/PROGRAM → MAIN 12.54V → 4.18 4.18 4.18 V  
BATT METER → H: 4.181V L: 4.179V → 0.00 0.00 0.00 V
```



Battery Resistance Meter

The user can check battery's total resistance, the highest resistance, the lowest resistance and each cell's resistance.

```
BATT/PROGRAM → TOTAL: 40mΩ → 015 012 013 mΩ  
BATT RESISTANCE → H: 15mΩ L: 12mΩ
```



Maximum Safety

Automatic Charging Current Limit  
Capacity Limit  
Temperature Threshold  
Processing Time Limit

\* The Maximum Safety makes the charger safer than B6 AC+ V1



Terminal Voltage Control

The charger allows user to set the charge/ discharge end voltage.

## PC Control

The user can monitor pack voltage, cell voltage and other data during the charging, view charge data in realtime graphs, and can also control charging and update firmware from "Charge Master".

The screenshot displays the ChargeMaster software interface. The top navigation bar includes icons for Charge, System, Program, and Help, along with the SKYRC logo and the tagline "Fly your dream". The main interface is divided into two sections: "Charge Setup" and "Staus".

**Charge Setup:**

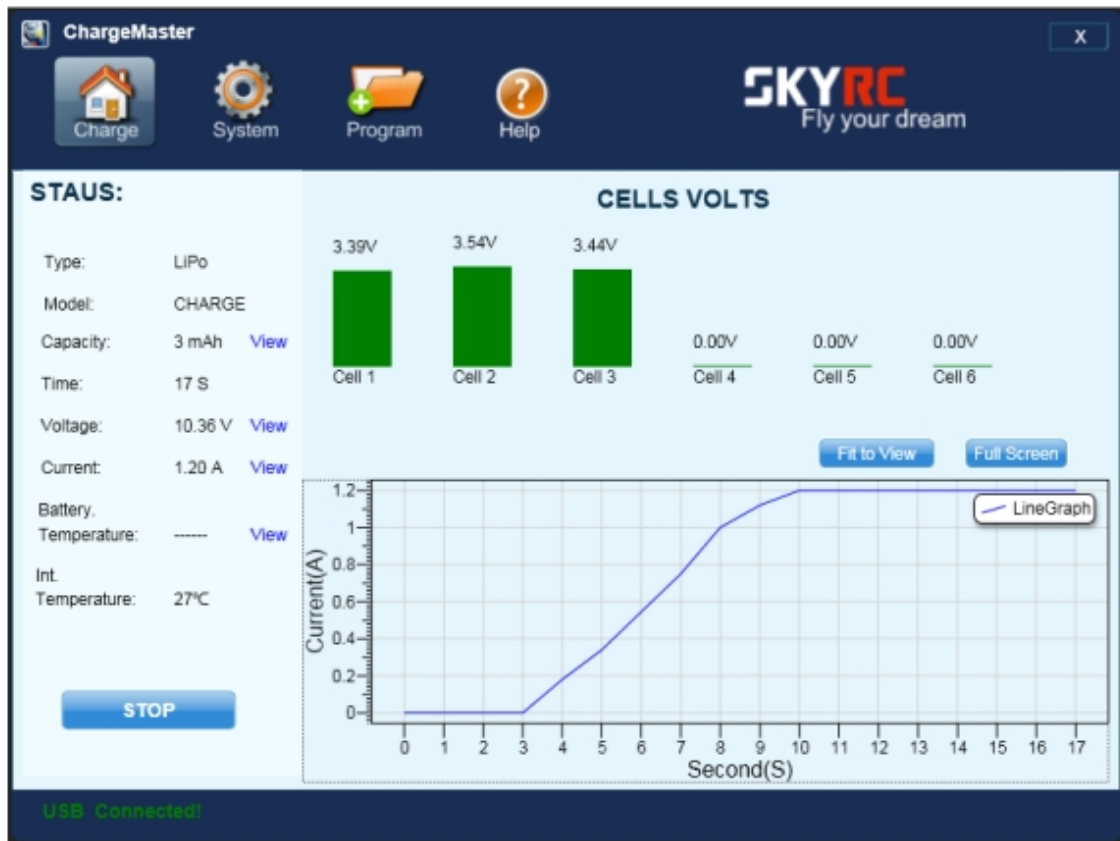
- Battery Type: LiPo
- Charger Mode: CHARGE
- Cell: 3 Cells
- Current: Charge 0.1 A Discharge 0.1 A

A large blue "START" button is located at the bottom of the Charge Setup section.

**Staus:**

- Voltage: 9.68V
- Cell1: 3.29 V
- Cell2: 3.49 V
- Cell3: 3.37 V
- Cell4: 0.00 V
- Cell5: 0.00 V
- Cell6: 0.00 V
- Max Cell Voltage: 3.49 V
- Min Cell Voltage: 3.29 V
- SAFETY TIMER: 180 Min(ON)
- CAPACITY CUT: 8000 mAh(ON)
- PROTECT TEMP: 80°C

At the bottom left of the interface, a green status bar indicates "USB Connected!".



Smart Phone Control  
& Monitor via Wi-Fi Module





## TECHNICAL DATA

DC Input Voltage	11-18V
Display Type	2x16 LCD
Display Backlight	Blue
Case Material	Metal
Cooling System	1 Built-in fan
Maximum Cells	LiPo/LiFe/LiIon: 1-6 cells NiMH/NiCd: 1-15 cells Pb: 2-20V
Charge Current	0.1-6.0A
Charge Wattage	60W
Discharge Current	0.1-2.0A
Discharge Wattage	5W
Weight	233g
Dimensions (LxWxH)	84x102x29mm

## DOWNLOADS

 [Instruction SkyRC B6 mini \(1.4 MiB\)](#)

 [Charge Master Windows Software \(49.7 MiB\)](#)