

## D100v2 100W/10A Balance Charger/Discharger (SK100131)

# AC/DC

# D100 v2

*Dual Balance Charger  
Discharger/Power Supply*



LiPo  
1-6 cell

LiHV  
1-6 cell

LiFe  
1-6 cell

Lilon  
1-6 cell

NiMH  
1-15 cell

NiCd  
1-15 cell

PB  
2-20 V

SkyRC D100 v2 is a twin-channel charger with two independent circuits which can charge batteries of varying chemistries (LiPo/LiHV/LiFe/Lilon/NiMH/NiCd/PB) simultaneously. Capable of operating as a power supply with the maximum output of 100W helps the hobbyists to power the DC equipments. With its unprecedented function of voice guide, even a freshman can use this charger without any hurdles.

Additional feature including our "SCAN TO GO" either..



Voice Guide



DC Power Supply



Power Distribution



SCAN TO GO



Lithium Battery Balancer



Discharge



Program Data Store/Load



Battery Meter



Battery Resistance Meter



Terminal Voltage Control



PC Control



Maximum Safety

---

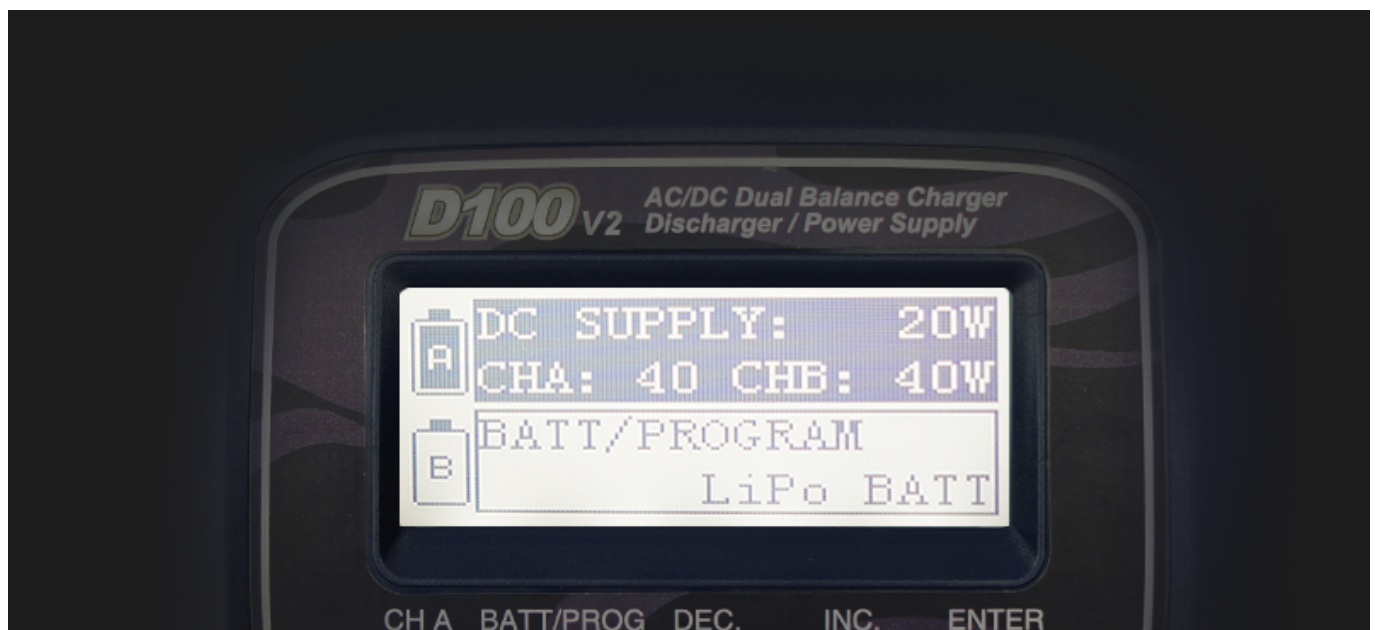


## Voice Guide

Purposes to make the charger more user-friendly and customizable. A speaker supported English and Chinese separately have been included in the left side of the charger that can reduce the times for misoperation

## Power Distribution

The charger supports power distribution between channel A / channel B and PSU under the total power of 100W in AC mode.



## DC Power Supply

The ability of supplying 100W/13.8V DC power dramatically expands its usage scope, which is really an amazing partner for hobbyists to power the DC equipments.

## Twin-channel charger

SkyRC D100 v2 allows you to plug 2 batteries into one charger simultaneously, and it will intelligently and



automatically charge 2 batteries at once.



## LiHV Mode Available

The additional LiHV mode is able to charge the new generation of LiPo batteries with an end of charge voltage of 4.35 V

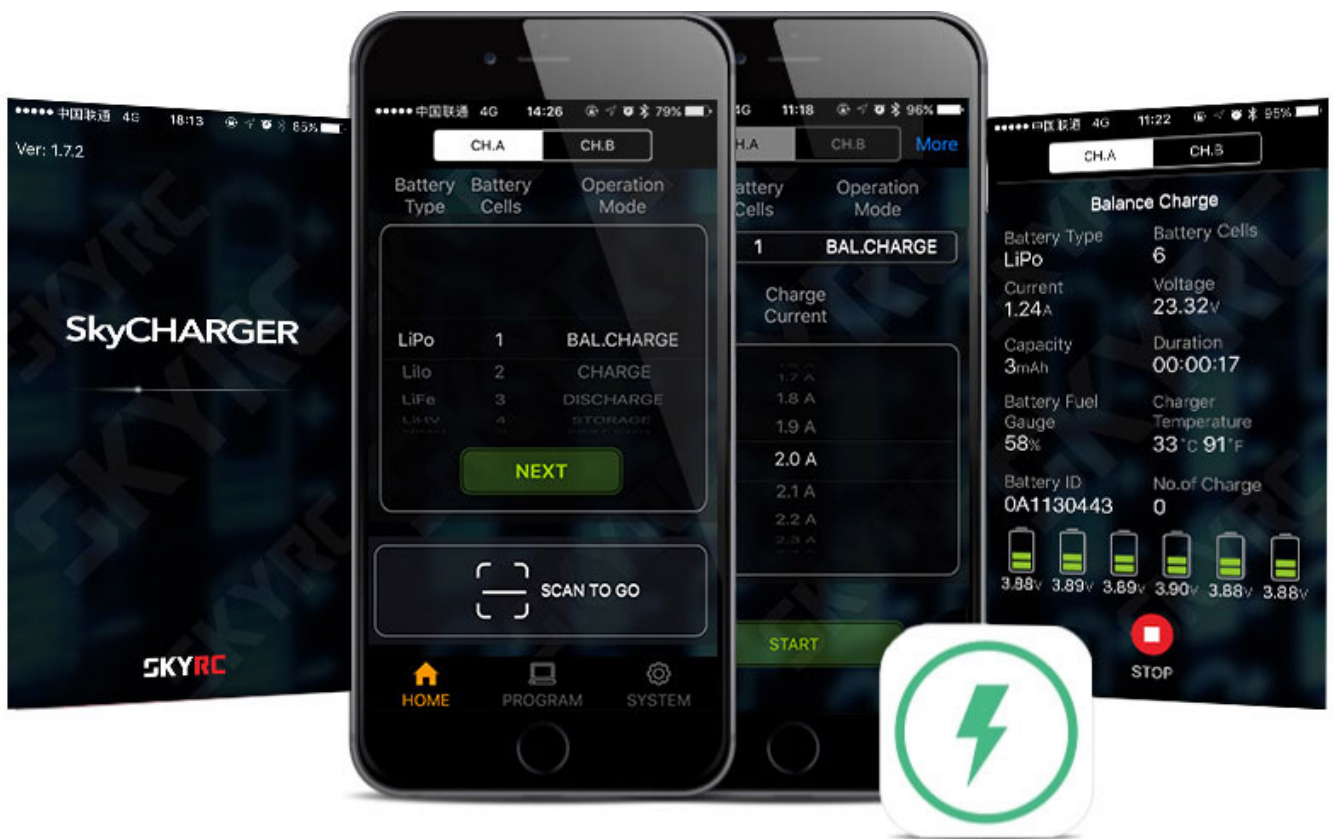


**SkyCharger App**



The Bluetooth 4.0 connectivity allows the user to remote control and monitor the D100 v2 comfortably through an app on a portable device such as smartphone, iPad, or iPhone. The iOS app can be downloaded from iTunes Store, the Android app from Google Play Store. Operation of the app is self-explanatory and the same on iOS and on Android. Explicit pairing is not required; after download and installation just activate Bluetooth on your mobile device and launch the app. D100 v2 and your device will establish Bluetooth connection automatically.

## Scan to Go



A very unique feature of D100 v2 is SCAN TO GO (automatically charging system). As the range of battery types and capacity becomes more and more, each battery requires its own dedicated charging process. It is easy to set up the charger incorrectly for a specific type of battery, resulting damage the battery or even cause accident.

The revolutionary SCAN TO GO provides a solution to this problem by allowing the user to assign a QR Code which contains all the relevant data for the battery for charging or discharging. The user can create a unique QR Code by using “SkyCharger” apps. Print it and paste it on the battery.

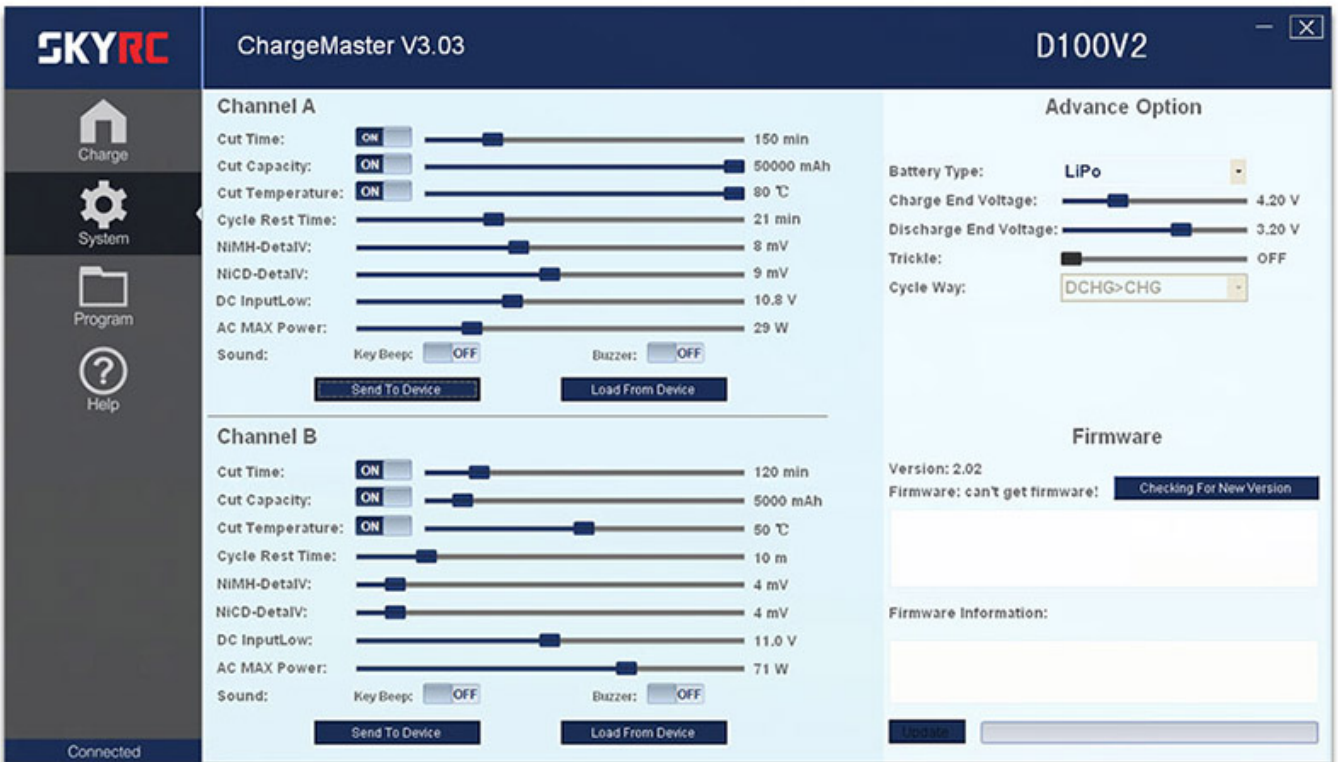
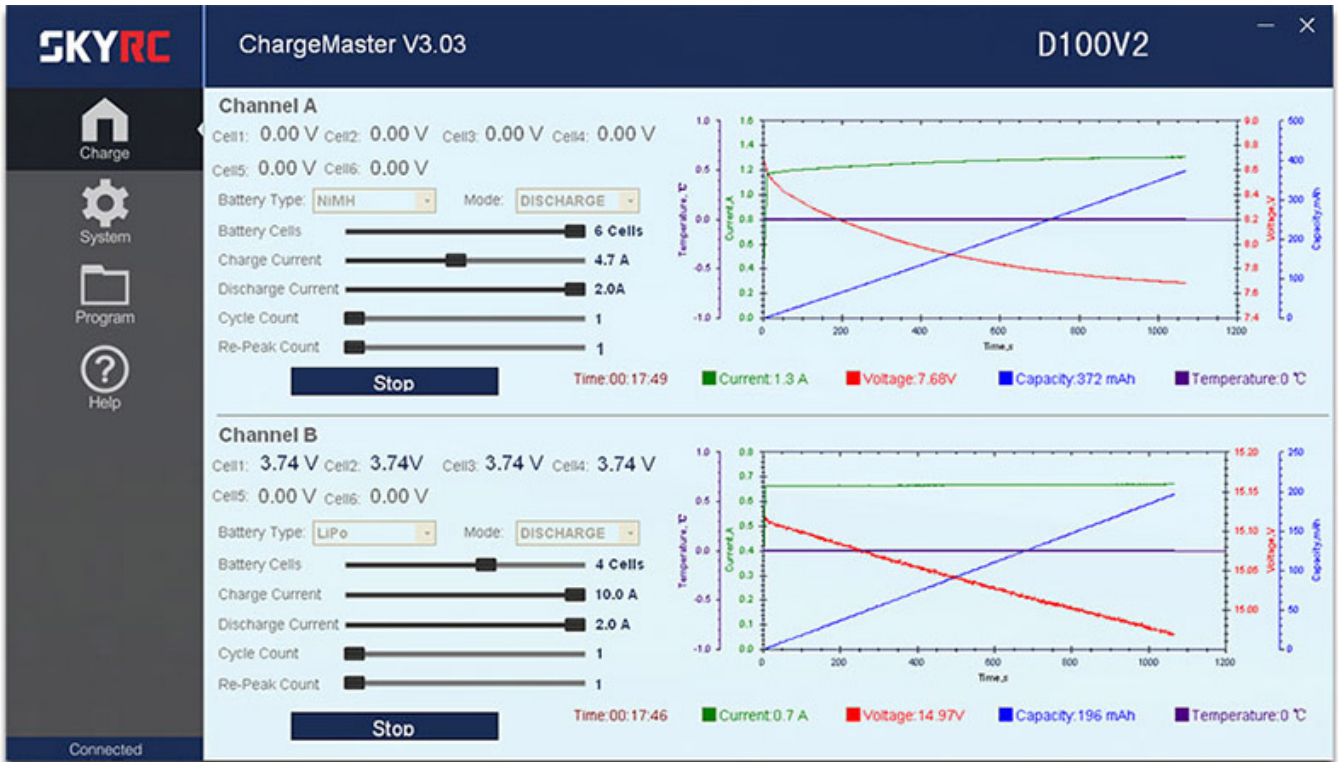
Using your smart phone and launch “SkyCharger” app. Since all the essential information is stored in the QR Code. All you need to do is press the Scan button, and the charge or discharge process will start automatically.

## Charge Master

The user can monitor pack voltage, cell voltage and other data during the charging, view charge data in



realtime graphs, and can also control charging and update firmware from "Charge Master".



TECHNICAL DATA

Input Voltage	AC 100-240V DC 11-18V
Charge Circuit Power	2x100W
DC Input	
Charge Circuit Power	100W (distribution adjustable)
AC Input	
Discharge Circuit Power	2 x 10W
Charge Current Range	0.1 - 10A
Discharge Current Range	0.1 - 2.0A
Current Drian for Balancing Port	Max. 300mA / cell
Trickle Charging Current	50mA - 300mA & OFF
DC Power Supply Output	13.8V / 10-100W
Display Backlight	White
Case Material	Plastic
Maximum Cells	LiPo/LiFe/LiIon: 1-6 cells NiMH/NiCd: 1-15 cells Pb: 2-20V
USB Output	5V / 2.1A
Weight	670g
Dimensions (LxWxH)	153x140x67mm

## DOWNLOADS

 [D100v2 Instruction Manual \(2.3 MiB\)](#)

 [SKYRC Charge Master Windows Software for D100v2 \(50.6 MiB\)](#)