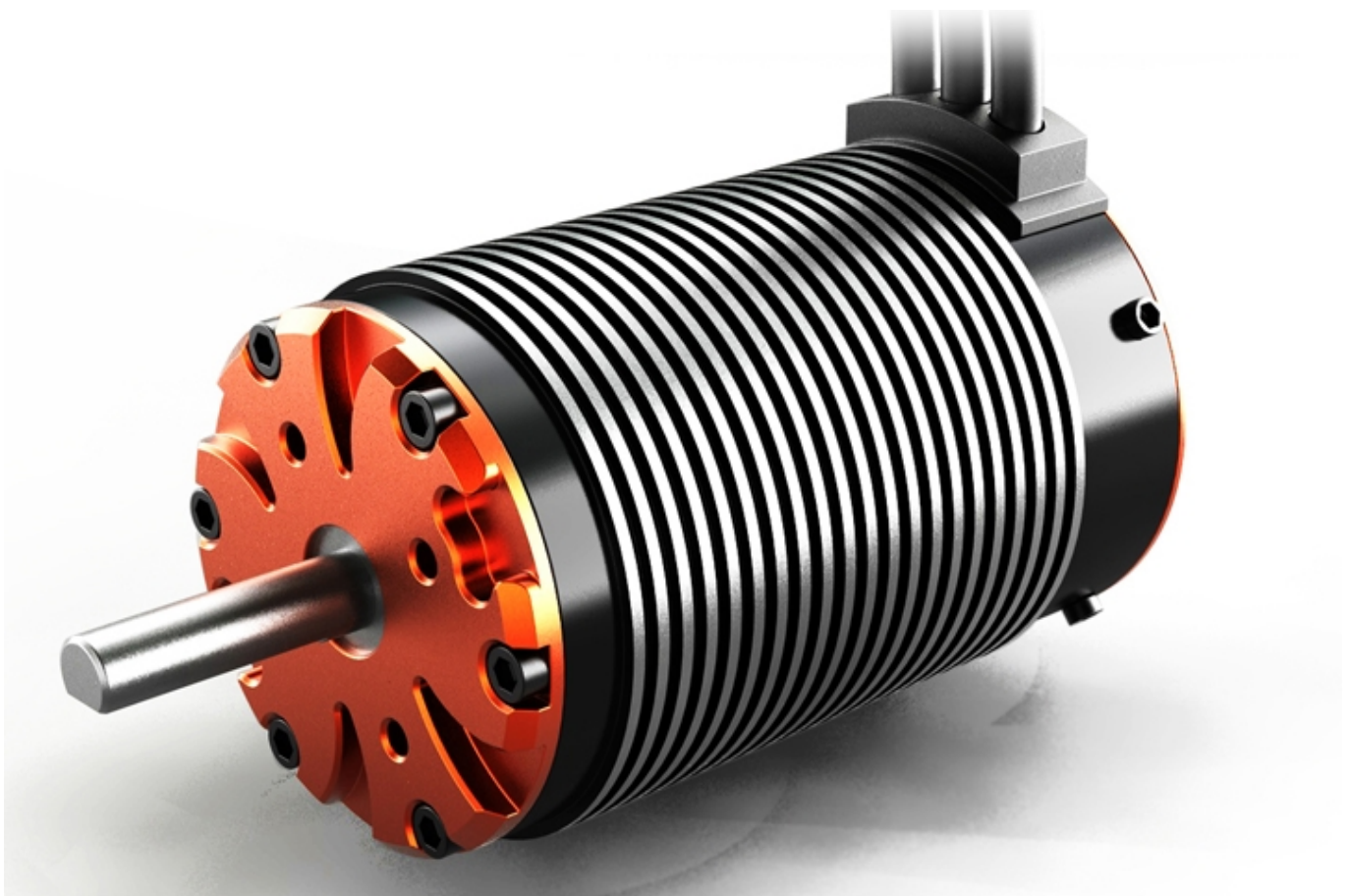


SKYRC Brushless Motor Toro Beast X524

08/06/2015 12:17 by admin (comments: 0) SKYRC

These Motors are especially designed for the 1/5 Brushless Large Scale Class. They meet all specs that are required to generate a maximum performance. The 4-Pole Rotor with Neodymium sintered magnets are giving a perfect power offering during the whole RPM range. The 12 Slot Hi-Torque Stator is supplying a fantastic torque. The rotor can get replaced very easy if needed.

The CNC cutted T6 Alloy Case with cooling fins is very reliable and helps to cool down the engine during the race.



Features:

- High Quality Bearings
- Rotor - 4 Pole Neodymium Magnets
- Stator - Super Thin (0.2mm) Laminations
- Super Strength 8mm shaft
- Can easily run up to 10 horse power range
- CNC Machined Billet T6 Aluminum Heatsinks Can
- High Purity Copper Windings Maximizes Conductivity
- Removable/Replaceable Rotor
- Precision Engineered for Maximum Energy Conversion

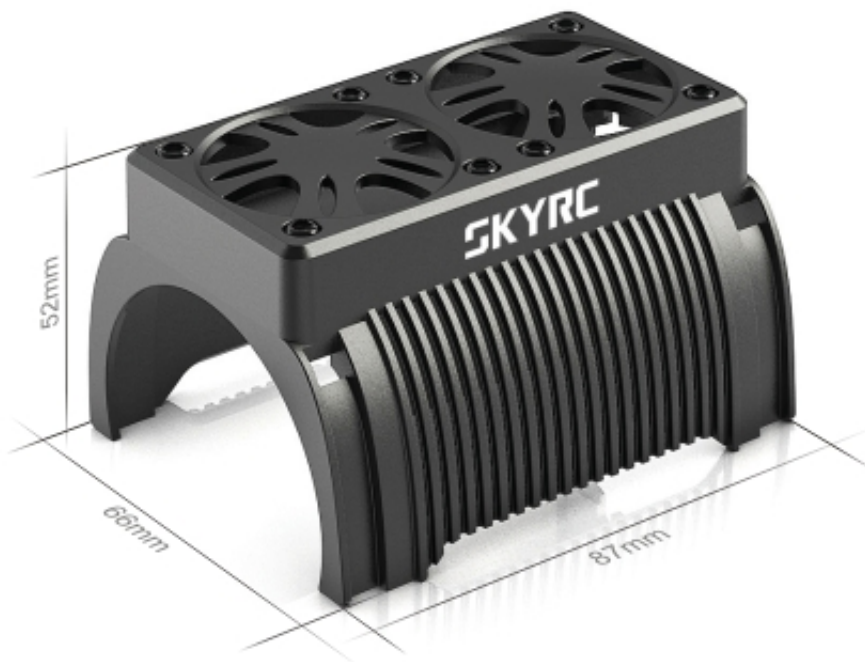
Technical Data:

- KV (Umin/V): 910
- Watts: 6300
- Max. Voltage: 33V
- Max. Amps: 190A
- Resistance: 0,0069 Ohm
- Max. RPM: 30000
- Length: 102mm
- Diameter: 57,8mm
- Weight: 1130g
- Shaft Diameter: 8mm
- Shaft Length outside: 30mm
- Turn: 2Y
- Rotor: 4 Pole
- Strator Length: 60mm

Item No.: SK400008-05 / X524 2Y 910kv

UVP: 199,-€ | Content: 1 pcs.

Optional Accessories



Twin Motor Cooling Fan with housing

The SKYRC twin motor cooling fan with housing fits 1/5 scale motor with diameter of 55mm and power connector can plug directly into any open channel of the receiver or BEC, it can reduce the temperature of the motor quickly and get the motor as cool as possible.

Pushing your 1/5 scale car to the limit! Get SKYRC twin motor cooling fan!

Item No.: SK400008

UVP: 16,10€

Installation

