

MC3000 AA/AAA Battery Charger & Analyzer (SK100083)

MC3000



The World's Most Joyful Round Battery Charger

The creation of this product arose from the desire to finally have a charger as versatile, accurate and powerful as a SkyRC hobby charger but tailored to a sweet battery tray for cylindrical single cell batteries; no more hassle with battery holders, fiddly wiring, clamps or similar DIY solutions.



Multi Chemistry

Support 7+ Battery chemistries & more than 42 battery sizes



Powerful & Accurate

- Battery Type: NiMH / NiCd / NiZn / Eneloop
 - Charge current: Max. 3A (x4 slots)

- Discharge current: Max. 2A (x4 slots)
 - Internal Accuracy**
 - (calibrated w/ accurate calibration source)
 - Voltage:
 - Current:
-
- Battery Type: Lithium-Ion / LiIo4.35 / LiFePO4
 - Charge current: Max. 3A (x4 slots)
 - Discharge current: Max. 2A (x1 slot)
 - Max. 1A (x4 slots)
 - Display Resolution
 - Voltage: 0.01V
 - Current: 0.01A



Effective Cooling

The built-in aluminum cooler effectively dissipates heat generated in the inside of the charger to the environment, even at slow fan speed.



Compact Display

The 128x64 pixels screen shows 5 different views during operation, see above a picture of Total Overview (TOV).

Rich User Interface

Eight Buttons for easy programming and operation. Four Slot Number Buttons (SNB) help to address the different slots. The other four buttons are for programming and operation.

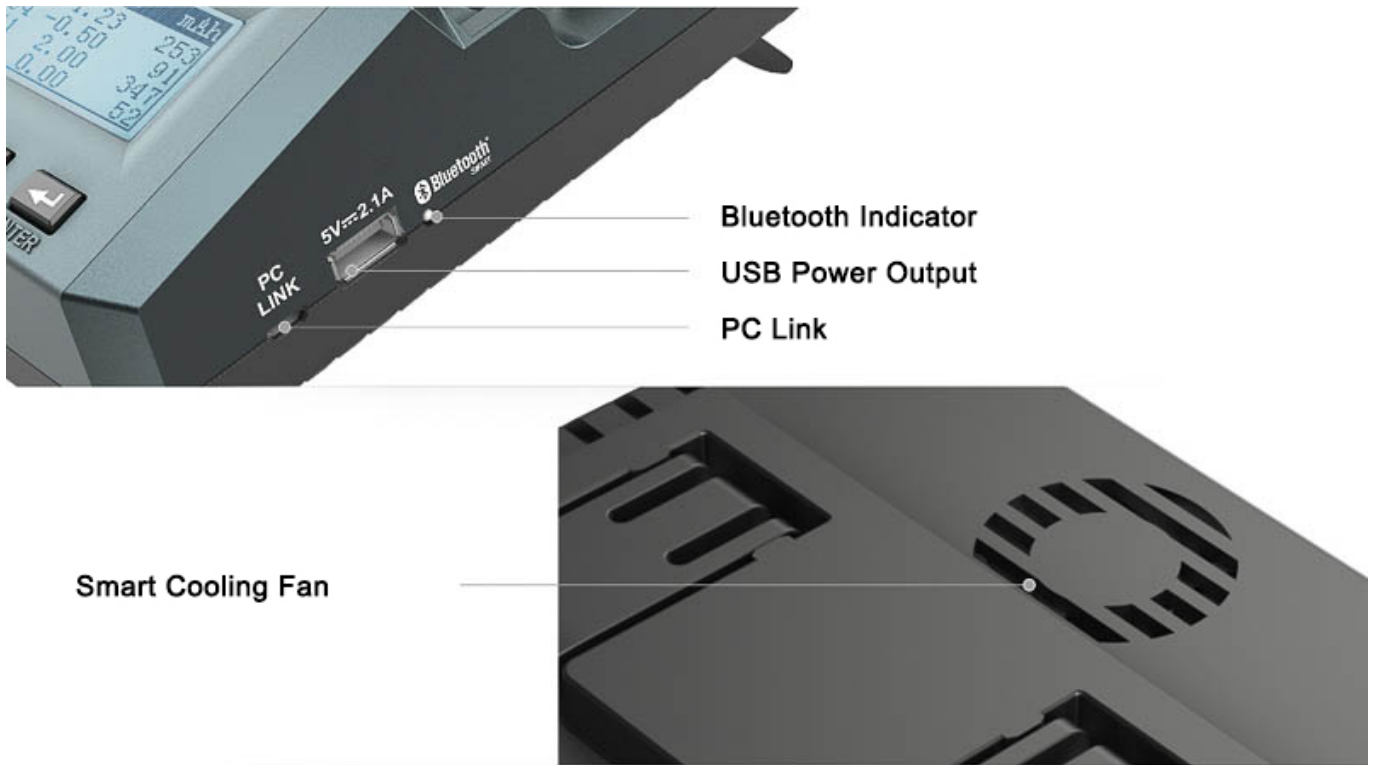
Easy Programmability

In Simple and Advanced UI modes, the charger operates off 30 user-defined operation profiles. The programs can be called up and run with few clicks, very conveniently.

Secure Stand

Rubber feet and strong tilt stand elements provide a firm stand. Tilted position enhances viewing angle and cooling air flow at the bottom side.





No-nonsense Modes

There are total 6 operation modes ('Break_in' for NiMH/NiCd/Eneloop batteries only, 'Storage' for Li-Chemistry batteries only).

1. Charge: Charge the battery at the selected rate. Suitable for frequently used batteries.
2. Discharge: Discharge the batteries at the selected rate.
3. Refresh Analyze: Suitable for batteries stored for more than two weeks but less than 3 months or the batteries showing poor performance. This mode can also determine the battery capacity for battery matching.
4. Break-In: Battery forming is a charge-discharge-charge cycle which forces a full charge into the new batteries and those stored for more than 3 months at a very low rate to activate the batteries.
5. Cycle: Performs charge-discharge cycle for up to 99 times. Cycle mode can remove memory effect of rechargeable batteries.
6. Storage: Charge/Discharge a lithium battery to a voltage which is, theoretically, better for storing a long time while maintaining the maximum of its lifespan.

Maximum Safety

- Current Limit
 - Capacity Limit
 - Temperature Threshold
 - Charging Time Limit
-

APP Control

BLE 4.0 technique enables user to operate the charger and view real time data and graphs via mobile application.



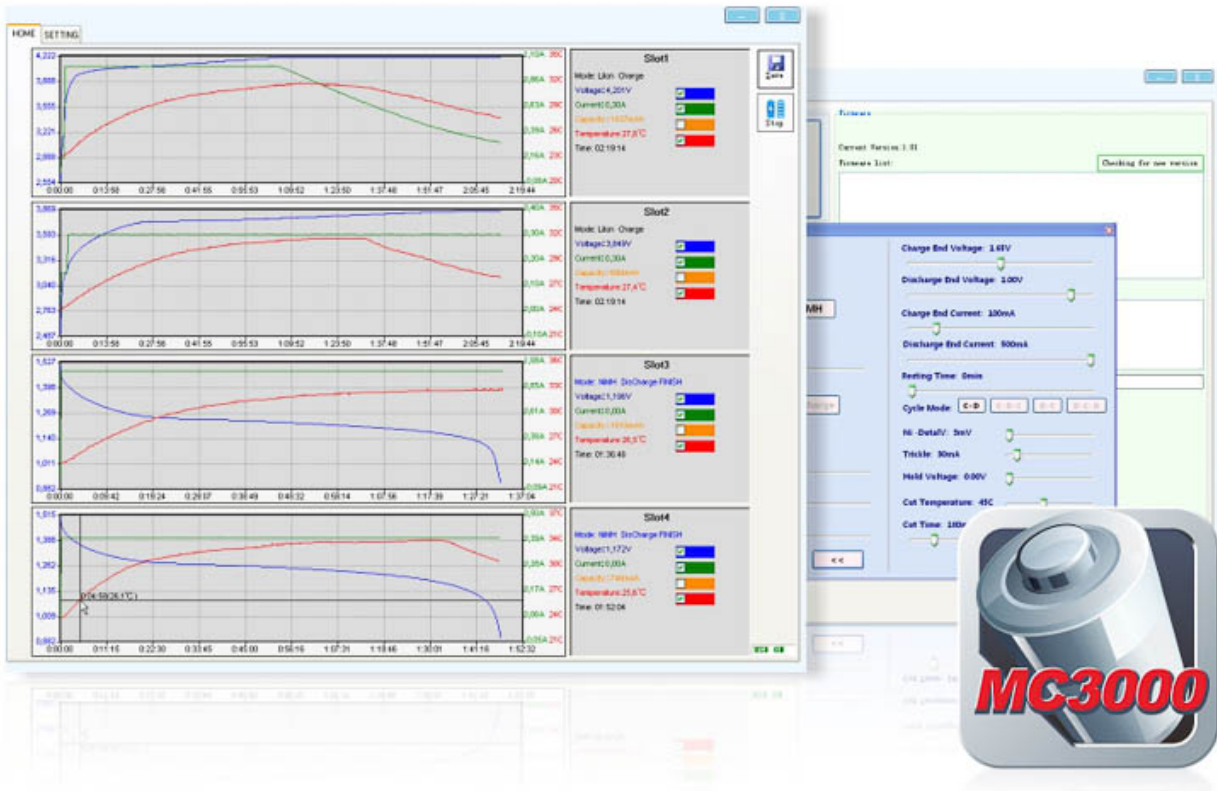
Scan with your iPhone to download.



Scan with your Android to download.

PC Control

User can use PC Link software to control the charger, view real time data with graphs, and also update the charger firmware through it.



TECHNICAL DATA

Input Power	DC 11-18V/4A
Charge Current Range	0.05-3.00A
Discharge Current Range	0.05-2.00A
Max. Charge Power	50W
Max. Discharge Power	15W
Battery Chemistry Type	NiMH, NiCd, NiZn, Eneloop, Lithium-Ion, LiIo4.35, LiFePO4
Battery Capacity	100-50000mAh
Operating Temperature	0-40°C
USB Power Output	DC 5V/2.1A
Dimensions(LxWxH)	200x124x69mm
Weight(Without DC Adaptor)	600g

DOWNLOADS

 [MC3000 Battery Charger & Analyzer \(SK-100083\) \(2.1 MiB\)](#)

 [SkyRC Firmware Update v1.11 \(165.3 KiB\)](#)

 [SkyRC MC3000 Monitor Software v1.0 \(287.7 KiB\)](#)