

S60 60W/6A Balance Charger/Discharger (SK100106)

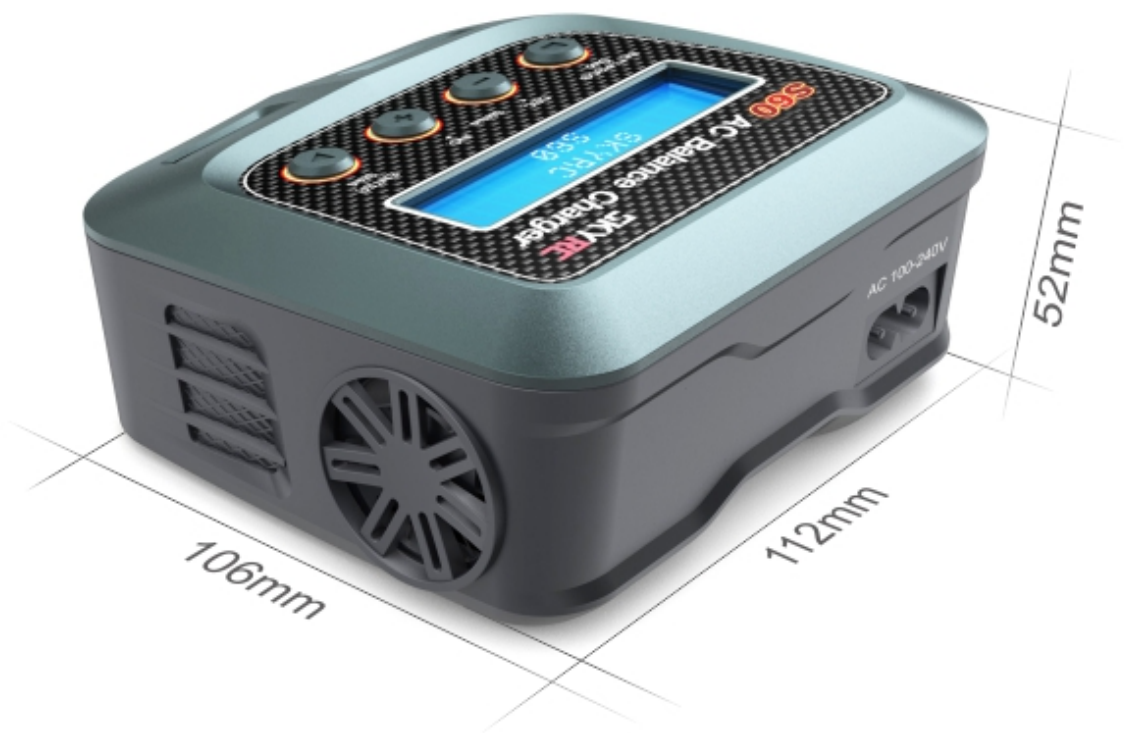
SKYRC S60 AC Balance Charger / Discharger



6 AMP | 60 Watt
Max. Power | Charge Current

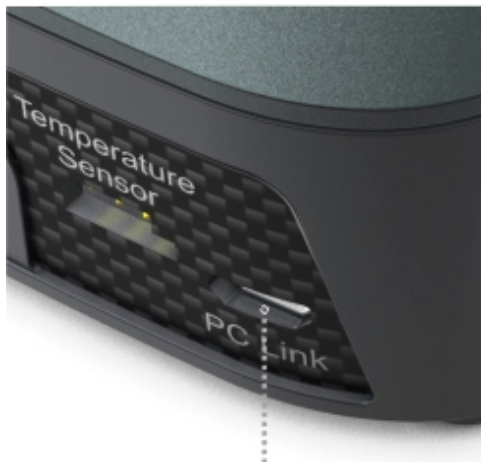


SkyRC S60 AC Professional Charger/Discharger stands out for its exquisite and stylish design. It can charge nearly all current battery types in the market, including new generation LiPo battery with end voltage 4.35V. What's more, users could set the terminal voltage by themselves and connect it to PC for PC control and firmware upgrade. Besides that, users could also use it as Lithium Battery Meter and Battery Internal Resistance Meter. There are Automatic Charging Current Limit, Capacity Limit, Temperature Threshold and Processing Time Limit which makes the charger safe to use.



Balance Lead
Socket JST-XH Ports

Output Charge
Lead 4mm Banana Plug



Micro Port for PC Link

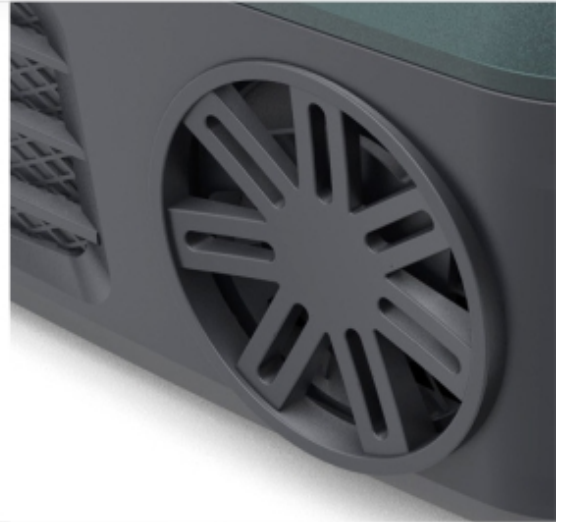
Temperature Threshold

* This function is available by connecting optional temperature probe, which is not included in the package.



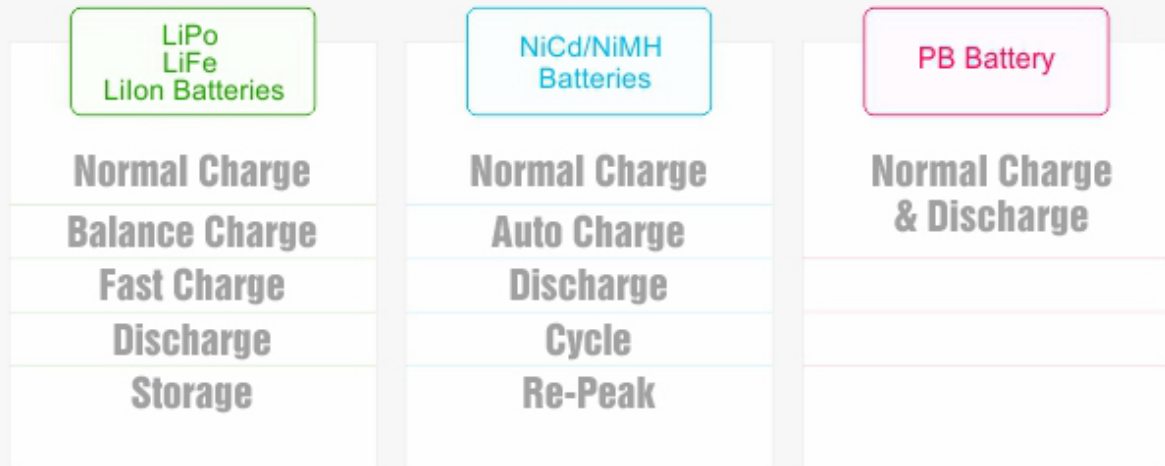
* Temperature Probe
SK-600040

Built-in
Cooling Fan



LiHV Mode Available

Different Charging Modes



Depending on different kinds of batteries, there are different charging modes to meet users' request.

Special Features



Lithium Battery Balancer

SKYRC S60 employs an individual-cell-voltage balancer. It isn't necessary to connect an external balancer for balance charging.



Program Data Store/Load

The charger can store up to 10 different charge/-discharge profiles for your convenience. Users can call out these data at any time without any special program setting.



Battery Meter

The user can check battery's total voltage, the highest voltage, the lowest voltage and each cell's voltage by this charger.

```
BATT/PROGRAM → MAIN 12.54V → 4.18 4.18 4.18 V  
BATT METER → H: 4.181V L: 4.179V → 0.00 0.00 0.00 U
```



Battery Resistance Meter

The user can check battery's total resistance, the highest resistance, the lowest resistance and each cell's resistance.

```
BATT/PROGRAM → TOTAL: 40mΩ → 015 012 013 mΩ  
BATT RESISTANCE → H: 15mΩ L: 12mΩ
```



Maximum Safety

Automatic Charging Current Limit
Capacity Limit
Temperature Threshold
Processing Time Limit

* The Maximum Safety makes the charger safer than B6



Terminal Voltage Control

The charger allows user to set the charge/ discharge end voltage.

Charge Master / PC Control

The user can monitor pack voltage, cell voltage and other data during the charging, view charge data in realtime graphs, and can also control charging and update firmware from "Charge Master".

The screenshot displays the ChargeMaster software interface. The top navigation bar includes icons for Charge, System, Program, and Help, along with the SKYRC logo and the tagline "Fly your dream". The main interface is divided into two primary sections: "Charge Setup" and "Staus:" (Status).

Charge Setup: This section contains several adjustable parameters:

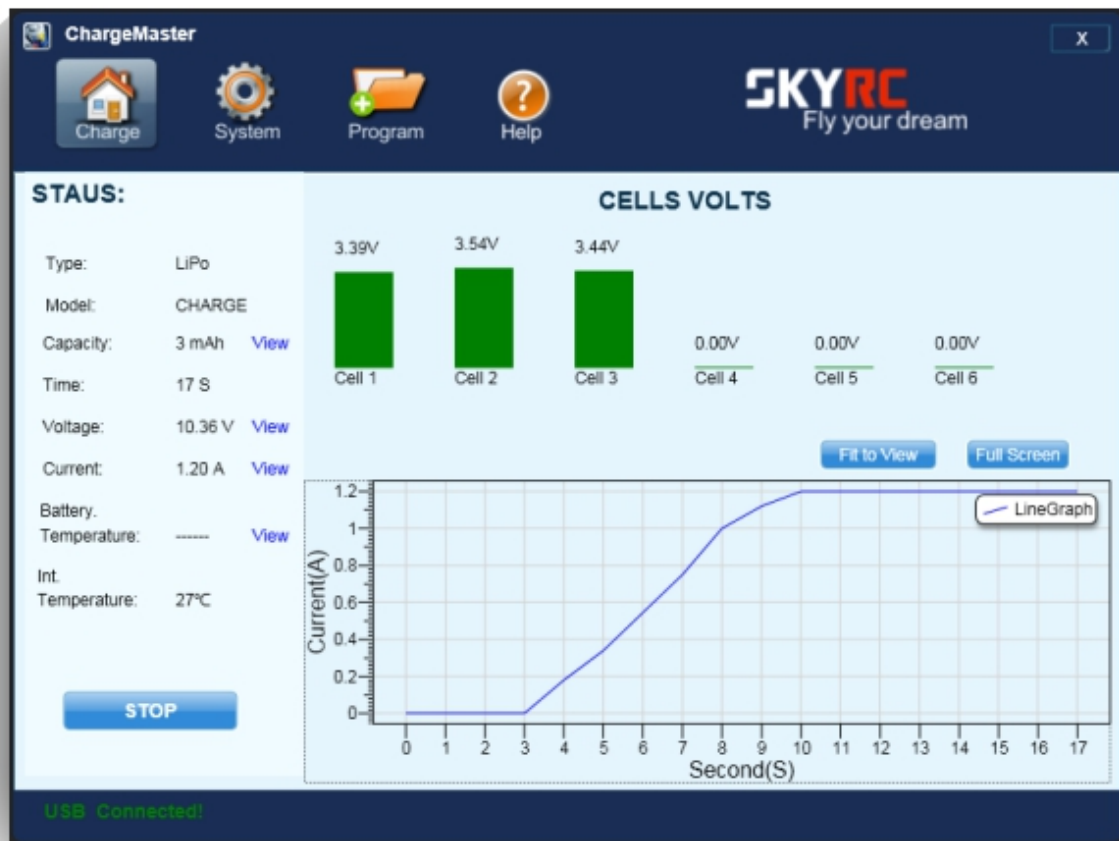
- Battery Type:** LiPo
- Charger Mode:** CHARGE
- Cell:** 3 Cells
- Current:** Charge 0.1 A Discharge 0.1 A

A prominent blue "START" button is located at the bottom of the Charge Setup section.

Staus: This section provides real-time monitoring data:

- Voltage:** 9.68V
- Cell1:** 3.29 V
- Cell2:** 3.49 V
- Cell3:** 3.37 V
- Cell4:** 0.00 V
- Cell5:** 0.00 V
- Cell6:** 0.00 V
- Max Cell Voltage:** 3.49 V
- Min Cell Voltage:** 3.29 V
- SAFETY TIMER:** 180 Min(ON)
- CAPACITY CUT:** 8000 mAh(ON)
- PROTECT TEMP:** 80°C

At the bottom left of the interface, a green status indicator reads "USB Connected!".



TECHNICAL DATA

Input Voltage	AC 100-240V
Charge Circuit Power	max. 60W
Discharge Circuit Power	10W
Charge Current	0.1 - 6.0A
Discharge Current	0.1 - 2.0A
Current Drian for Balancing Port	Max. 200mA / cell
Trickle Charging Current	50mA - 300mA & OFF
Display Backlight	Blue
Case Material	Plastic
Maximum Cells	LiPo/LiFe/LiIon: 2-4 cells NiMH/NiCd: 6-8 cells Pb: 6-12V
Weight	310g
Dimensions (LxWxH)	106x112x52mm

DOWNLOADS

 [SKYRC Charge Master Windows Software v3.01 \(2.5 MiB\)](#)