

1S 120A Electronic Speed Controller (SK300048)

Built-in DC Booster & Capacitor Module



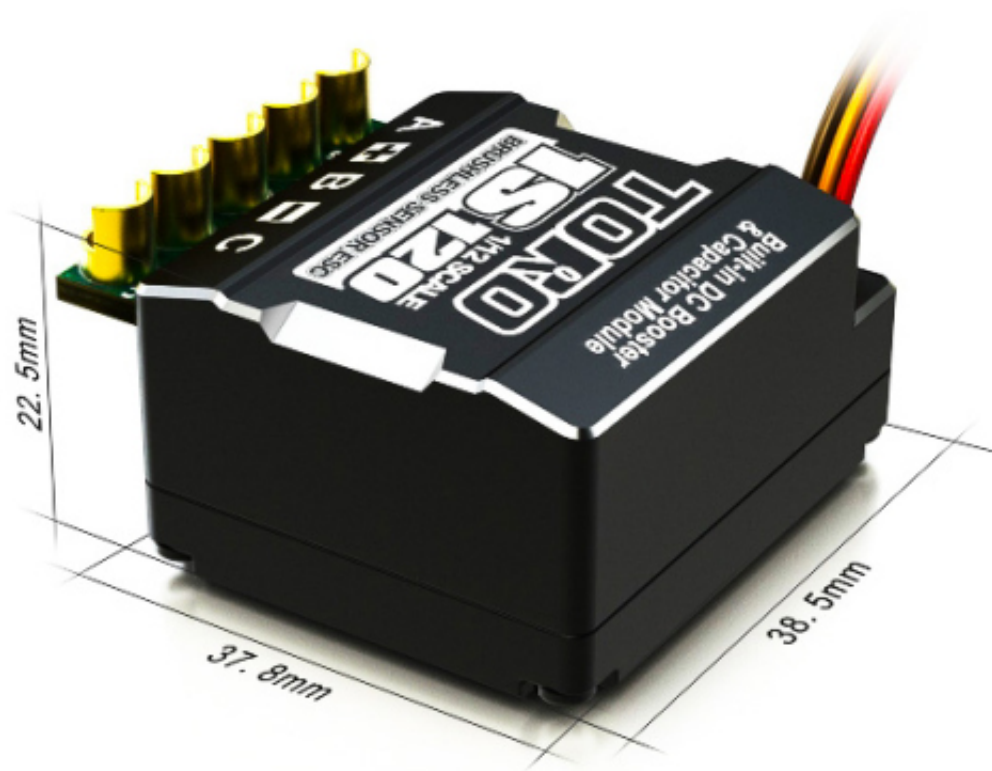
Toro 1S 120A ESC for 1/12 Onroad Competition

Toro One Cell 120A ESC is designed for 1/10th Scale one-cell class racing with small size, built-in power switch and durable aluminum out case. It also comes with built-in DC-booster and capacitor module.

It features advanced timing system and well-performed throttle and brake control function. Racers could set the boost and turbo timing precisely, and punch/brake control rate by point or customize the throttle/brake curve to meet the request for linear and power.

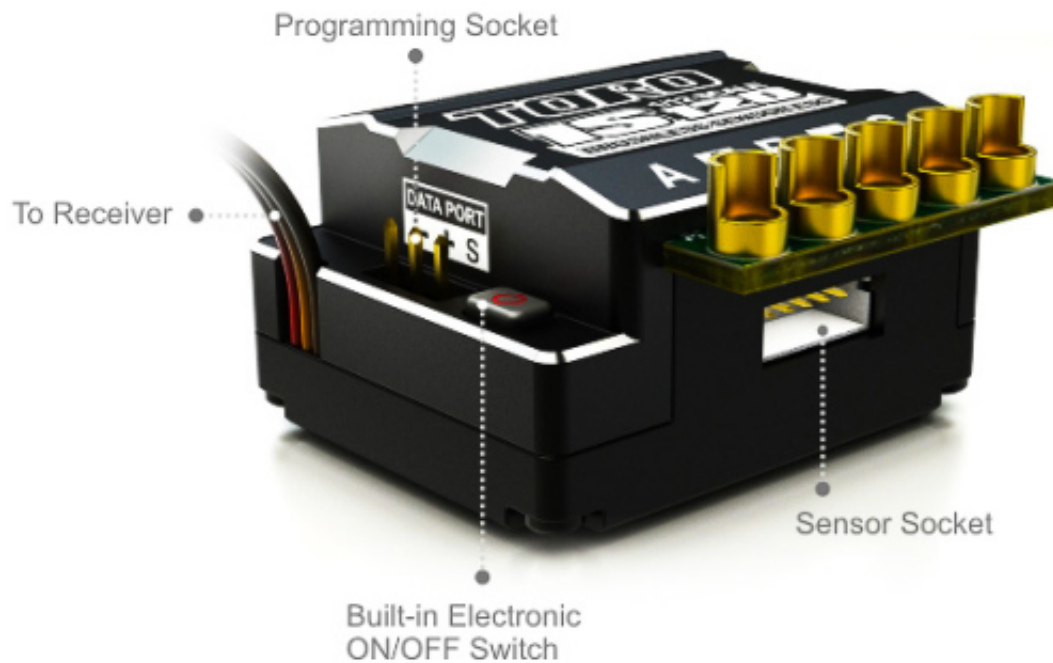
It also supports firmware update and can be programmed by SkyLink via PC, Program Box and even your smart phone.

Compact Design



Built-in Electronic Switch

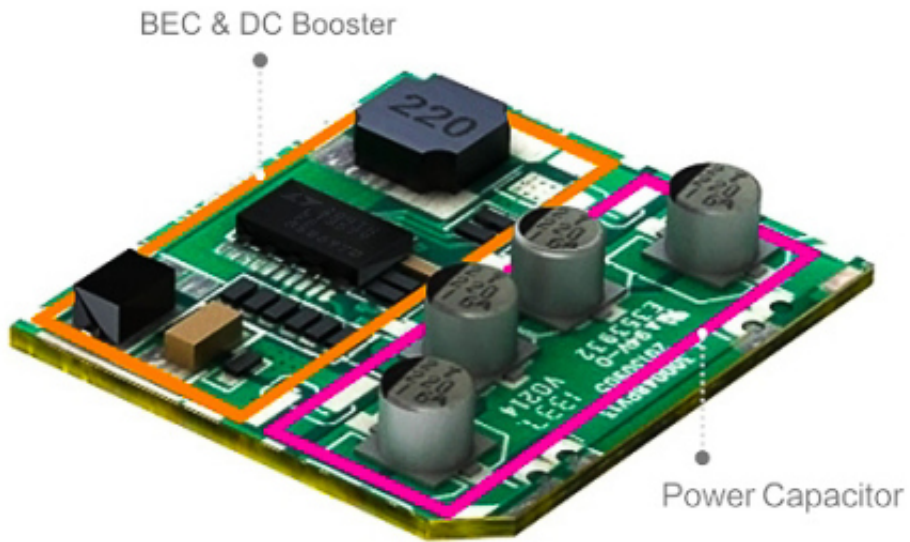
The electronic switch is built in so that it could save space.
And the electronic switch is more sensitive and reliable.



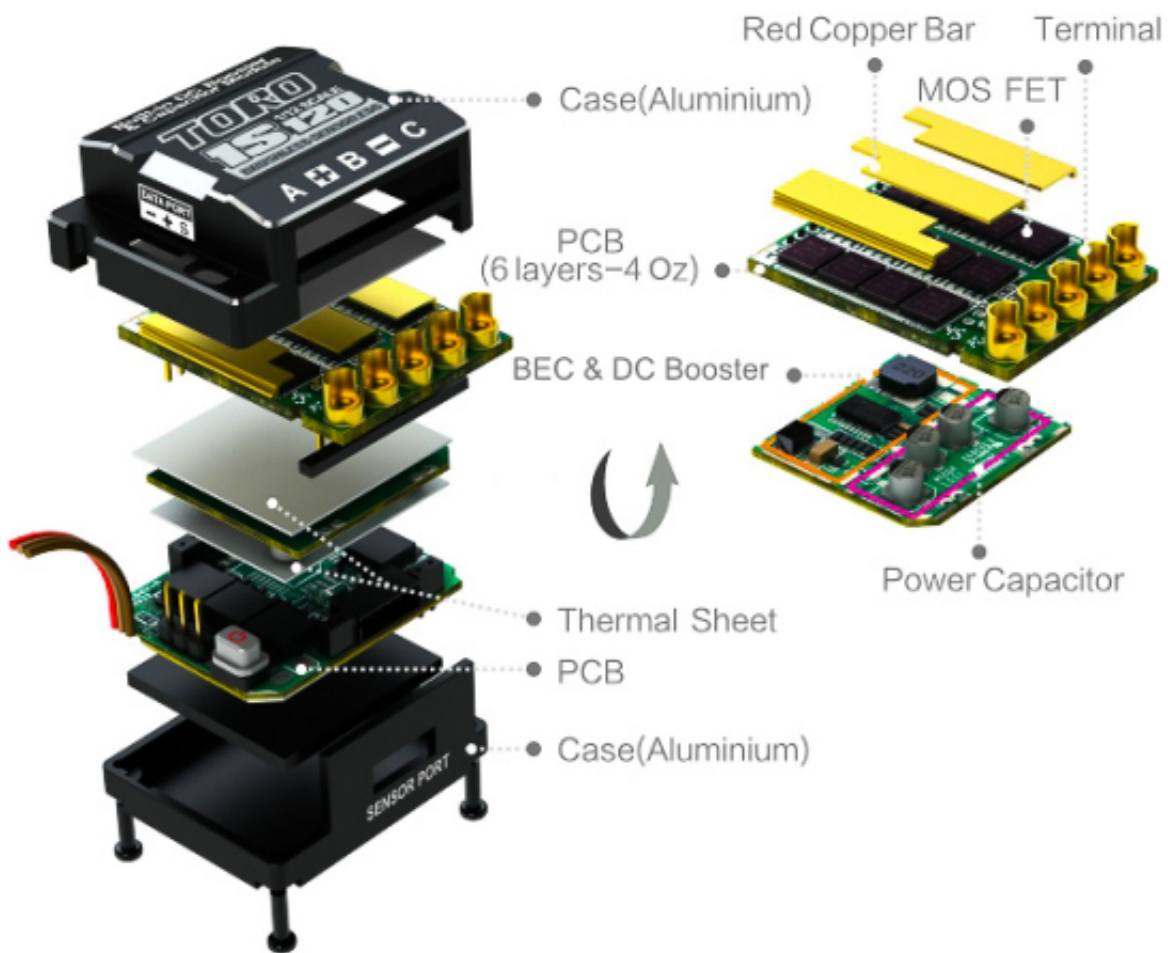
Built-in DC Booster & Capacitor Module

This ESC comes with built-in DC booster, which allows drivers to power their vehicle's electronics on a single 1 cell Li-Po battery pack without installing additional external boosters or receiver pack.

And it's with built-in capacitor module. This feature does away with the need to use a separate capacitor.

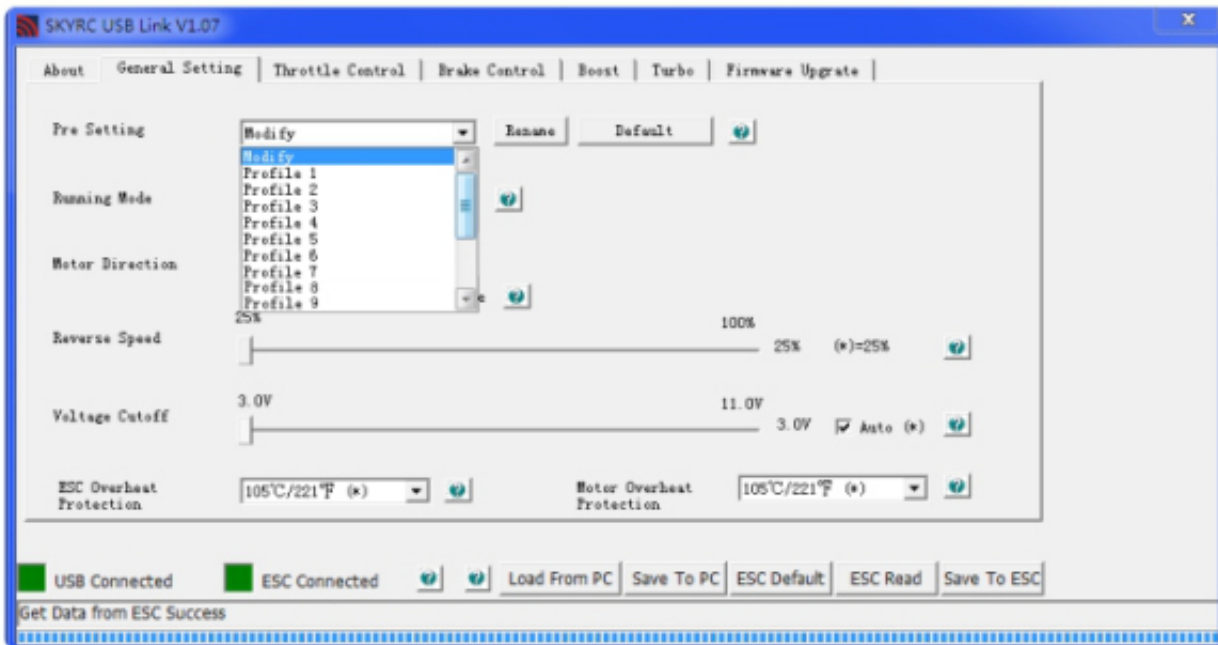


Less Resistance, Less Heat, More Efficiency



10 User Modifiable Profiles

The users could set and store 10 sets of profiles in the ESC. These data could be called out at any time without any special program setting. All the setting can be exported or imported so that the user could compare and analyze.



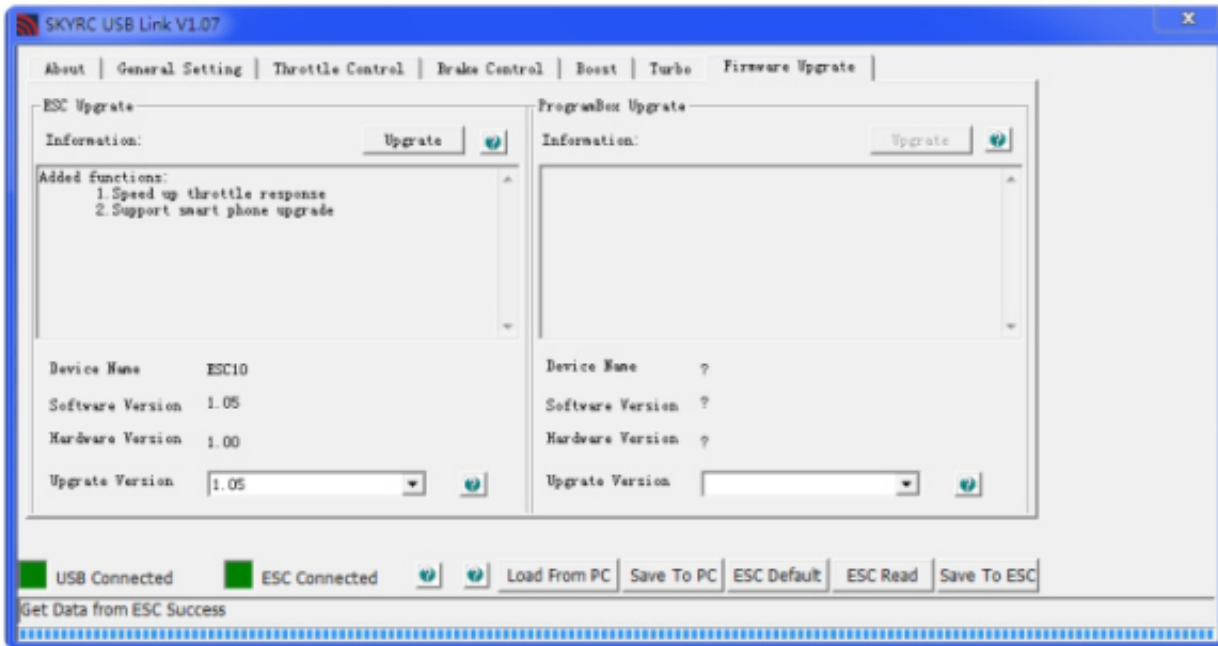
Safety Features



Low voltage protection
Motor and ESC overheat protection
Signal lost protection

Firmware Update

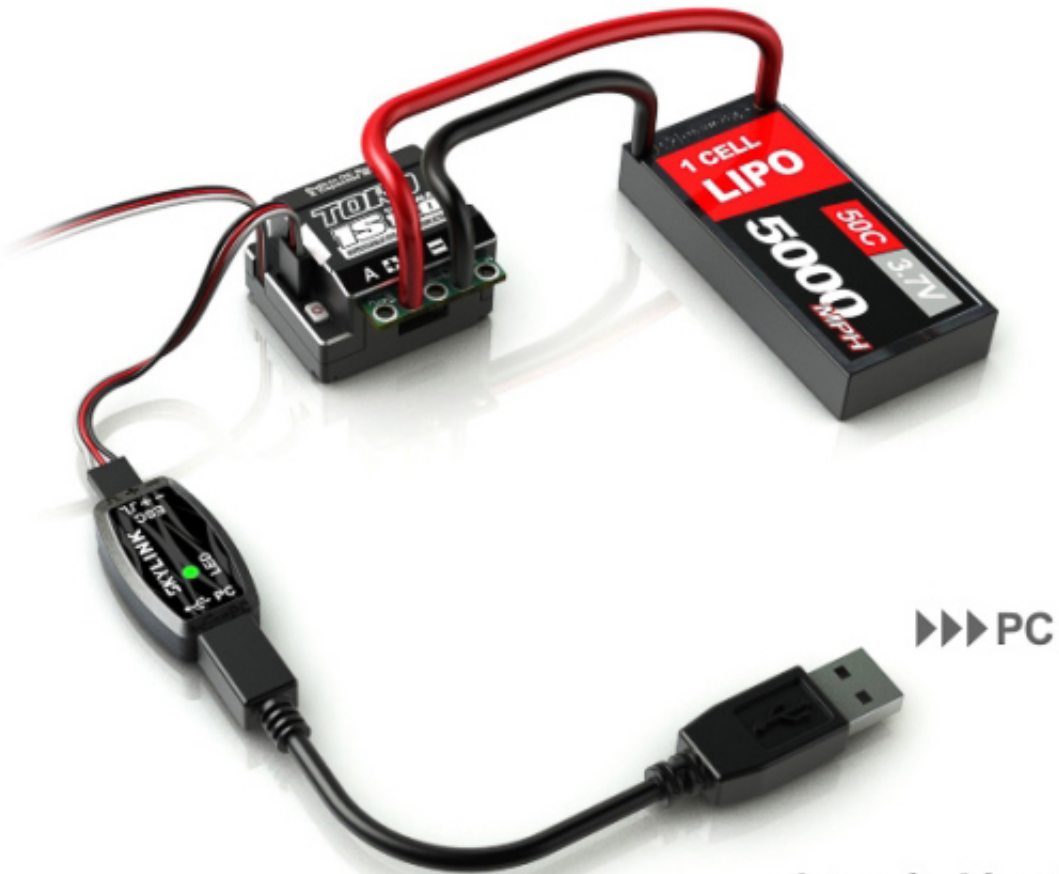
The firmware can be updated by connecting the ESC with a PC or a smart phone.



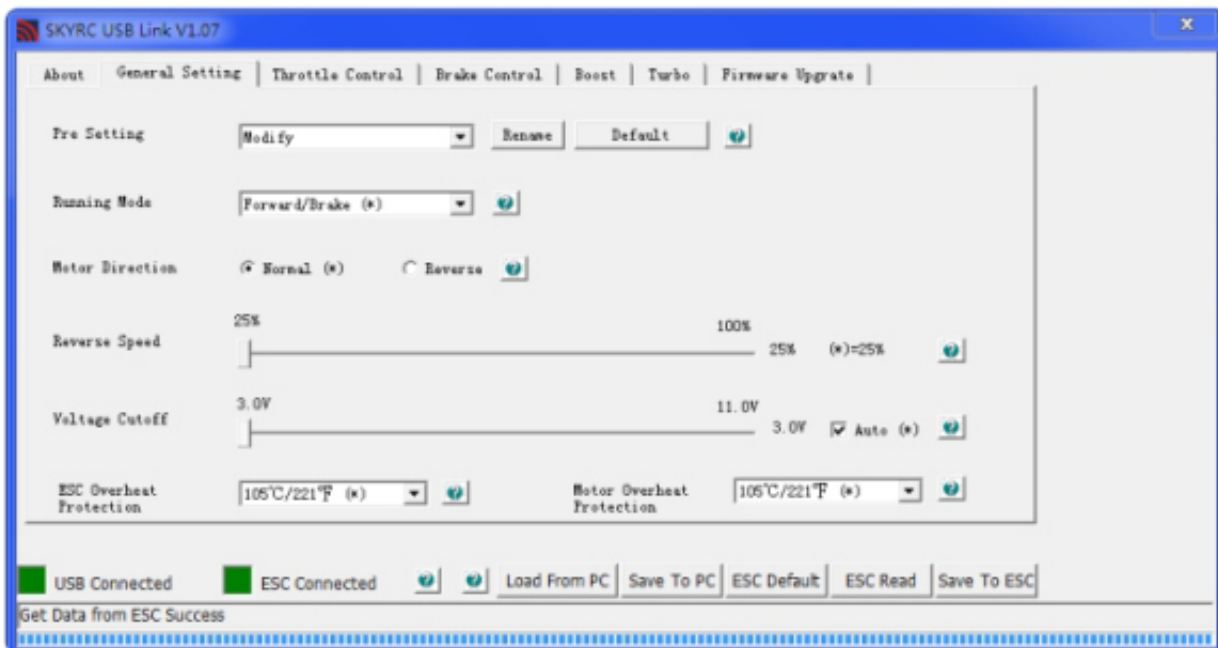
Programming Methods

The ESC can be programmed with:

1. SKYLINK (SK600013)



pictured with options



2. PROGBOX (SK300046)

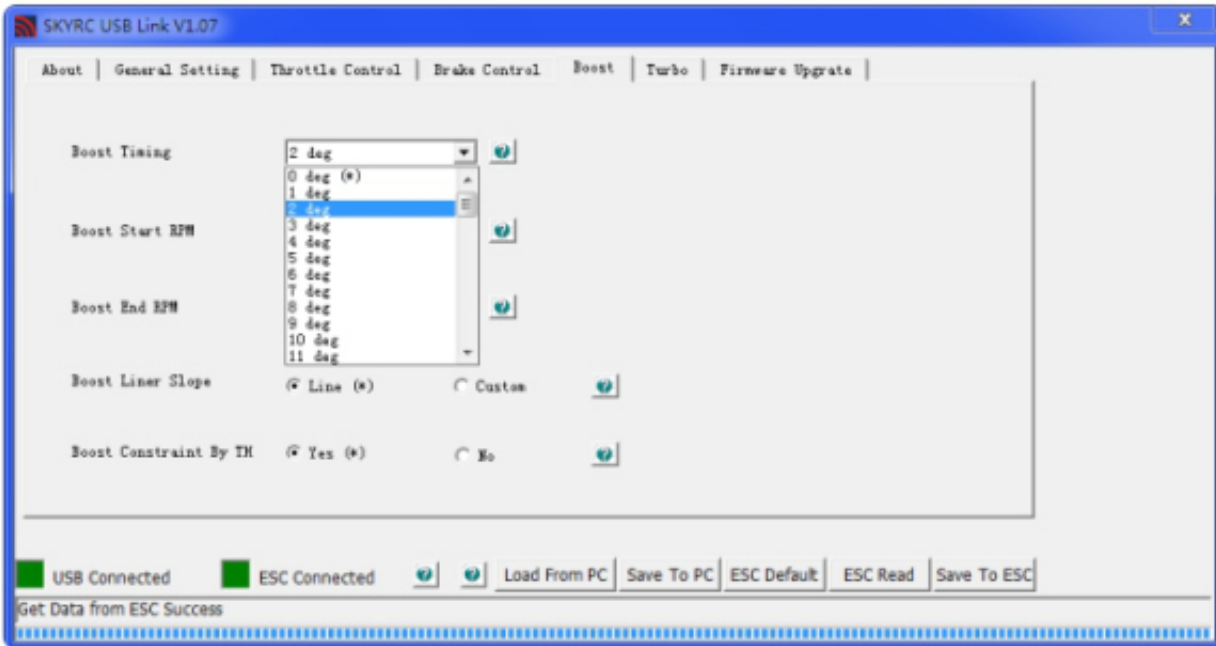


pictured with options

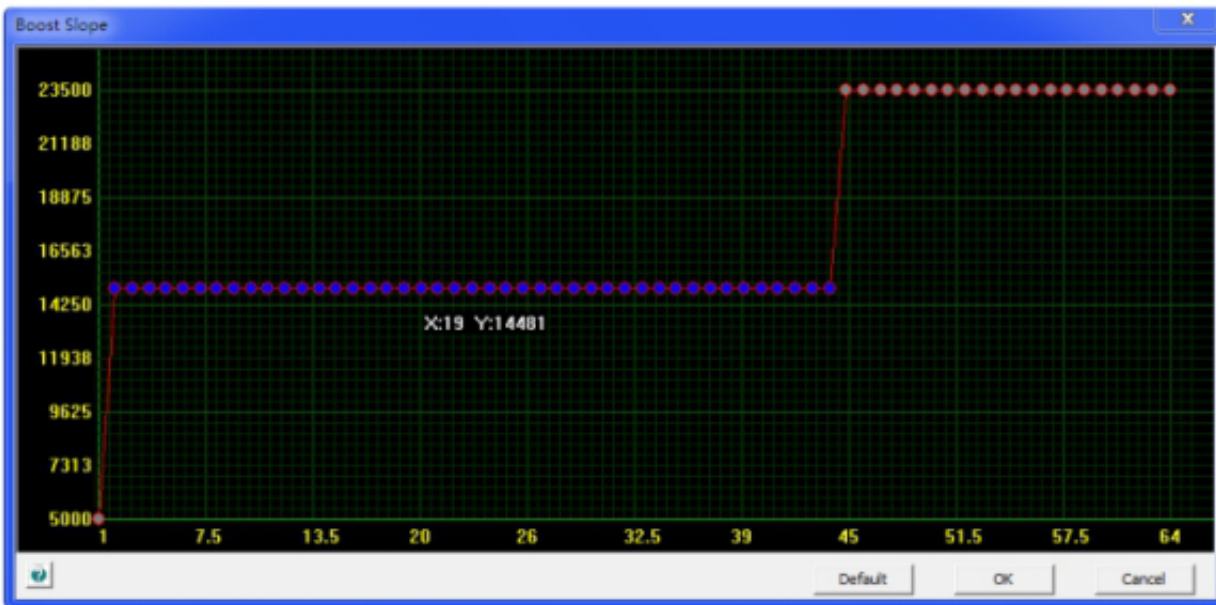
Precise Programmable Items

Advanced Timing System

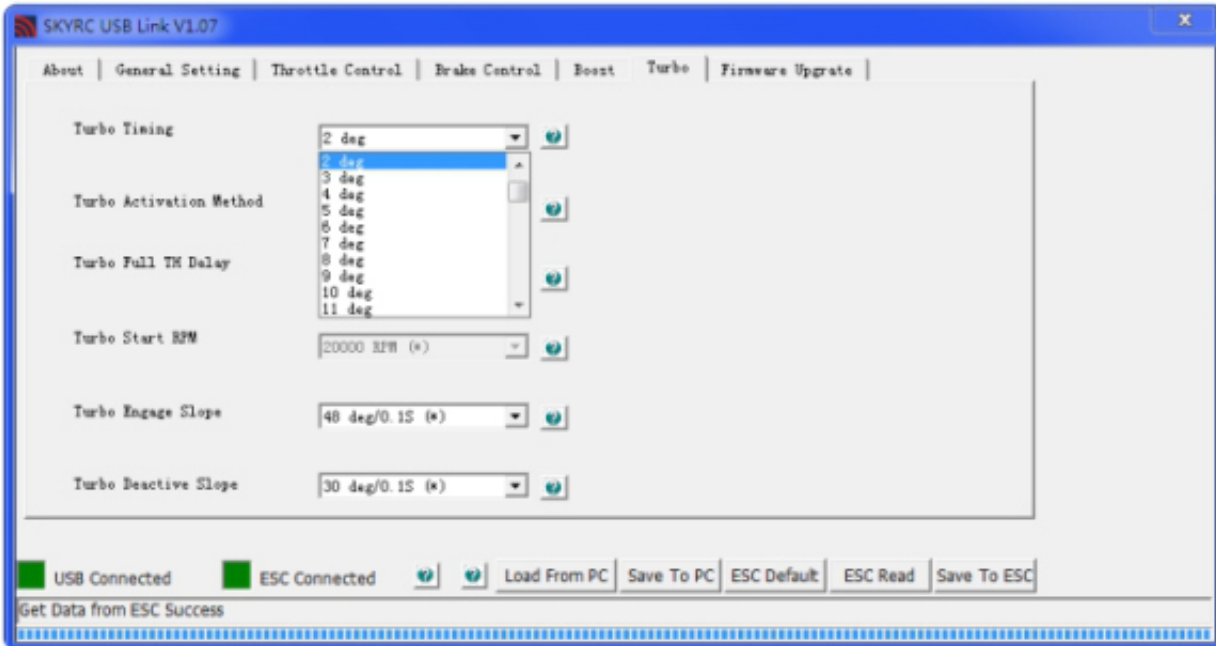
Users could set the turbo and boost timing which can improve the motor RPM to get its best performance.



Boost Timing Setting



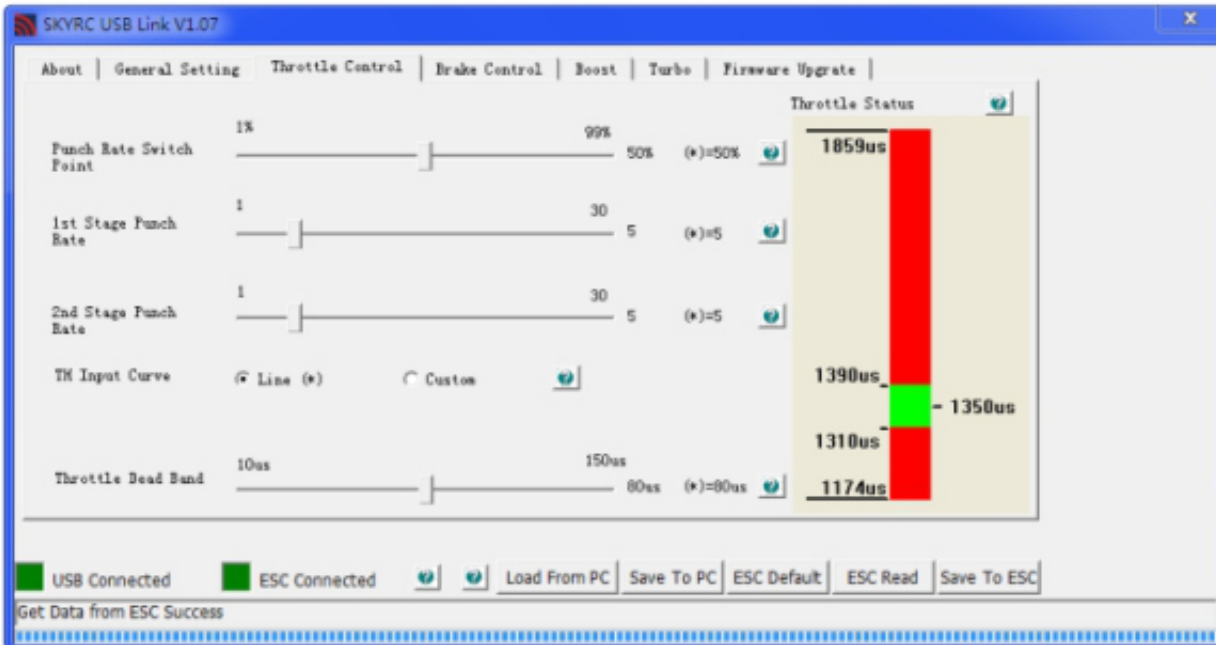
Boost Curve Custom



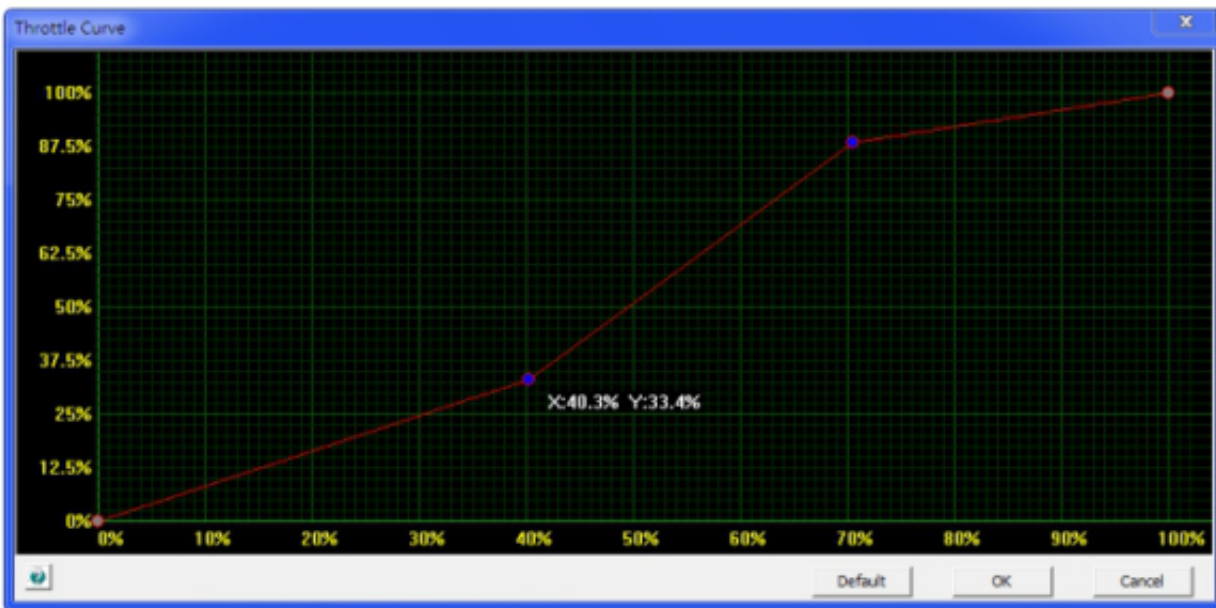
Turbo Timing Setting

Well-performed Throttle & Brake Control Function:

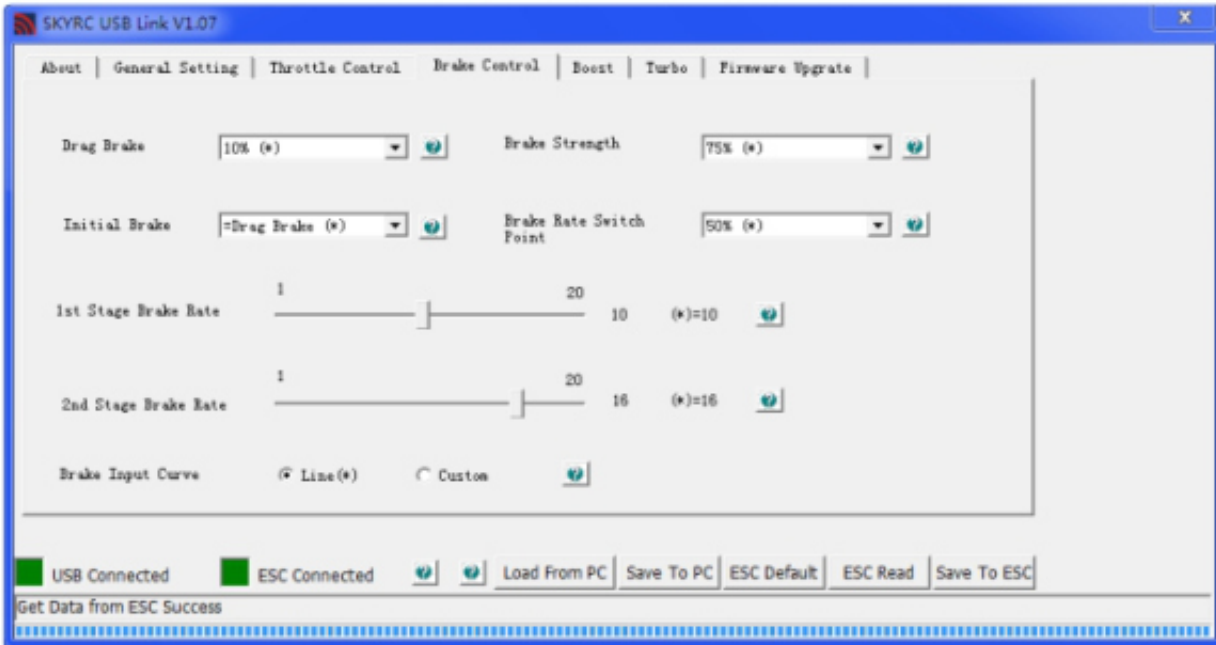
Users could set the punch/brake control rate by point or custom the throttle/brake curve by themselves, and different customers' request for linear and power all can be met.



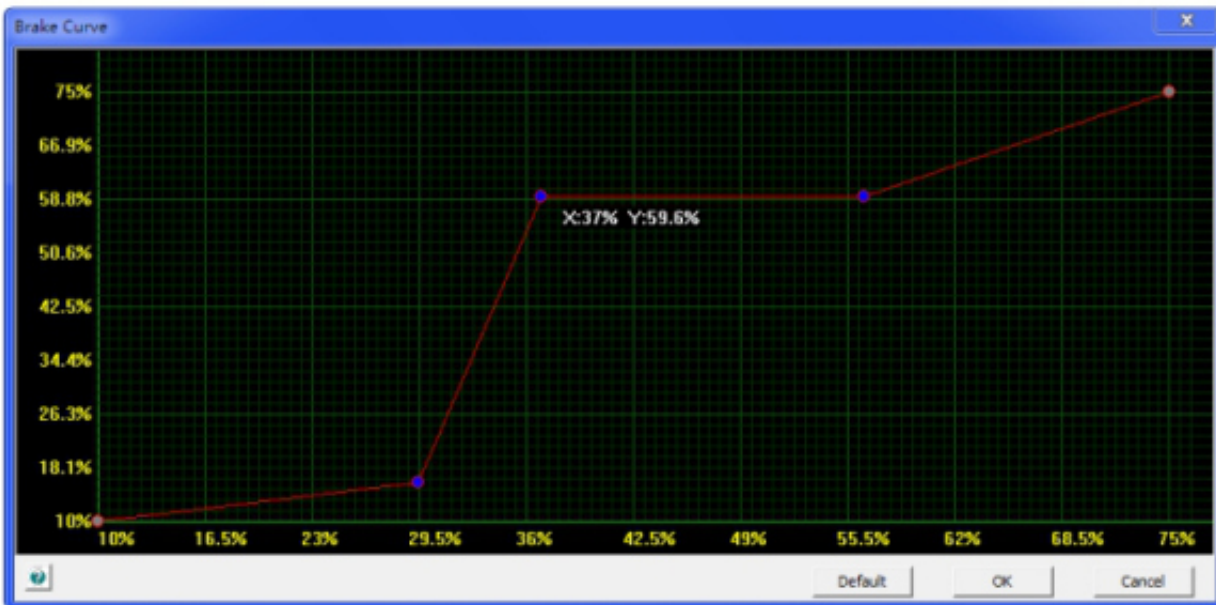
Throttle Control Setting



Throttle Curve Custom



Brake Control Setting





Brake Curve Custom

TECHNICAL DATA

Constant/Burst Current	120A / 760A
Motors	Sensor & Sensorless Brushless Motors
Cars	1/12 On Road competition
Motor Limits	≥ 3.5T (3 slots, 2 poles, 540 class motor)
Resistance	0.0003 Ohm
Battery Cell Count	1S LiPo
BEC Output	6V @ 3A, line
Weight	50g (without wires)
Dimensions (LxWxH)	37,8 x 38,5 x 22,5mm

DOWNLOADS

-  [SkyRC Toro 1S 120A \[SK300048\] Manual \(1.2 MiB\)](#)
-  [SkyRC_UsbLink_V1.07.zip \(1.1 MiB\)](#)