

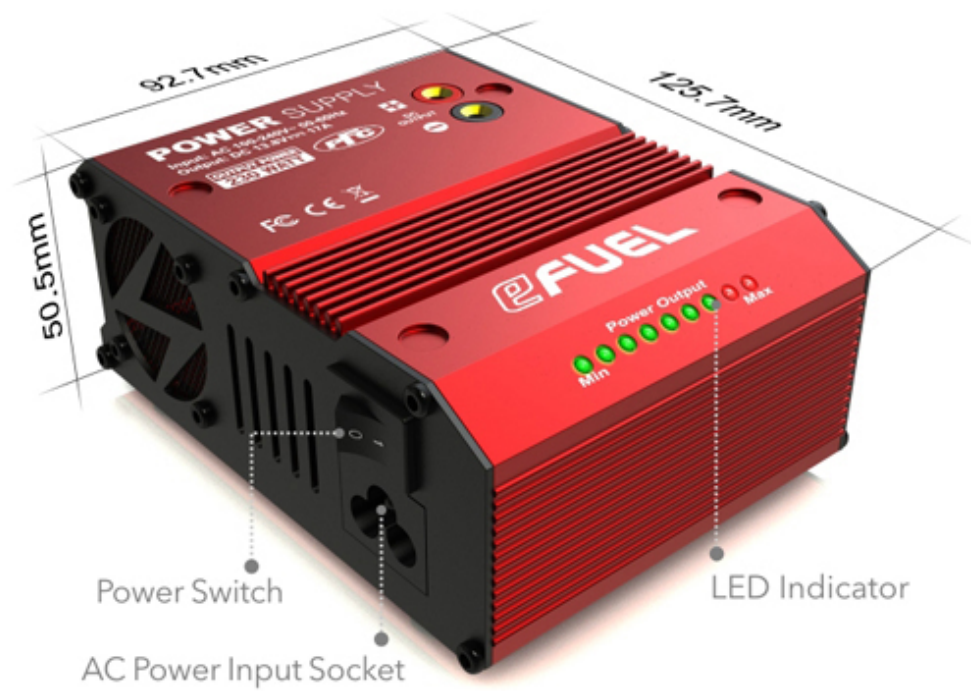
eFuel 230W/17A Power Supply (SK-200017)



Super-compact Size eFuel 230W/17A Power Supply

The eFUEL can convert standard household power 100-240V AC to 13.8V DC power and supply max 17 amperes of continuous power. It delivers smooth and reliable power and it not only enables RacingStar RS16 Charger but also RacingStar RSTW Tire Warmer to dock directly without the use of messy DC cables. It can also be used with other DC devices.

All-new Design





Active PFC

Active PFC Design: smaller AC
input current, less interference,
and conform to CE regulations.



Power Factor Correction (PFC) allows power distribution to operate at its maximum efficiency. There are two types of PFC, Active PFC and Passive PFC. The preferable type of PFC is Active Power Factor Correction (Active PFC) since it provides more

efficient power frequency. because active PFC uses a circuit to correct power factor, active PFC is able to generate a theoretical power factor of over 95%. Active Power Factor Correction also markedly diminishes total harmonics, automatically corrects for AC input voltage, and is capable of a full range of input voltage.

Two DC Outputs

Two DC power outputs, total output power up to 17 amperes.

Output 1 is located on the top and the output 2 is located on the right side of the power supply.



AC Input 100-240V

Worldwide operation: need
not any alternative switcher,
worldwide safe operation.



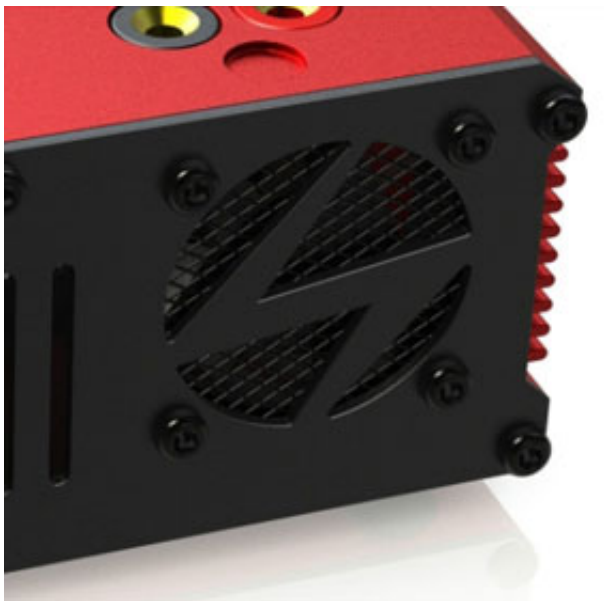
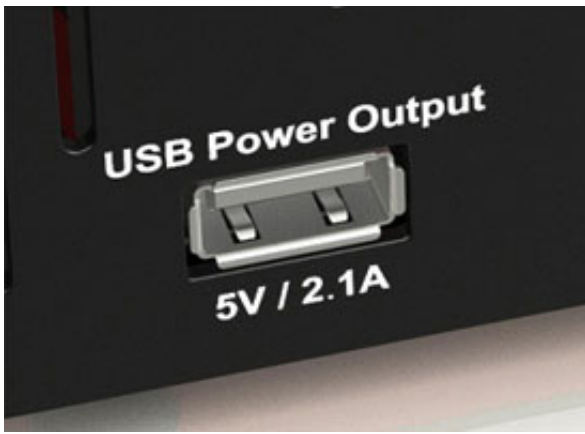


Nine LED indicators

Nine LEDs indicates output power from minimum to maximum.

5V / 2.1A USB Port

5 volts USB power port, 2100mA for
charging tablets, mobile phones,
cameras and etc.



Smart Cooling Fan

Turns on automatically upon
the temperature of 50°C.

Safety Features



Over current, over temperature and short-circuit protection on output for safer and more reliable operation.

Direct Plug Docking System

There is DC output on the top of the power supply and it is designed for use with SKYRC RS16 Charger and SKYRC RSTW Tire Warmer. A pair of dual banana plugs which is used to connect the Charger/Tire Warmer and power supply are included in the package.



TECHNISCHE DATEN

Input Voltage	100-240V AC
Input AC Frequency	50-60Hz
Output Voltage	13.8V DC \pm 0.2V
Output Current	17A \pm 0.5A

Current Overload Protection	>17.5A 500ms
Input Fuse	5A
Output Voltage Ripple	0.98
Over Temperature Protection	65°C
Cooling Method	Cooling Fan
Operating Temperature Range	0-40°C
Operating Humidity Range	0-90%
Weight	602g
Dimensions (LxWxH)	125.7x92.7x50.5mm

DOWNLOADS

•



[SkyRC eFuel 230W \[SK200017\] Manual \(538.1 KB\)](#)