

# Manual for Robitronic Upgrader

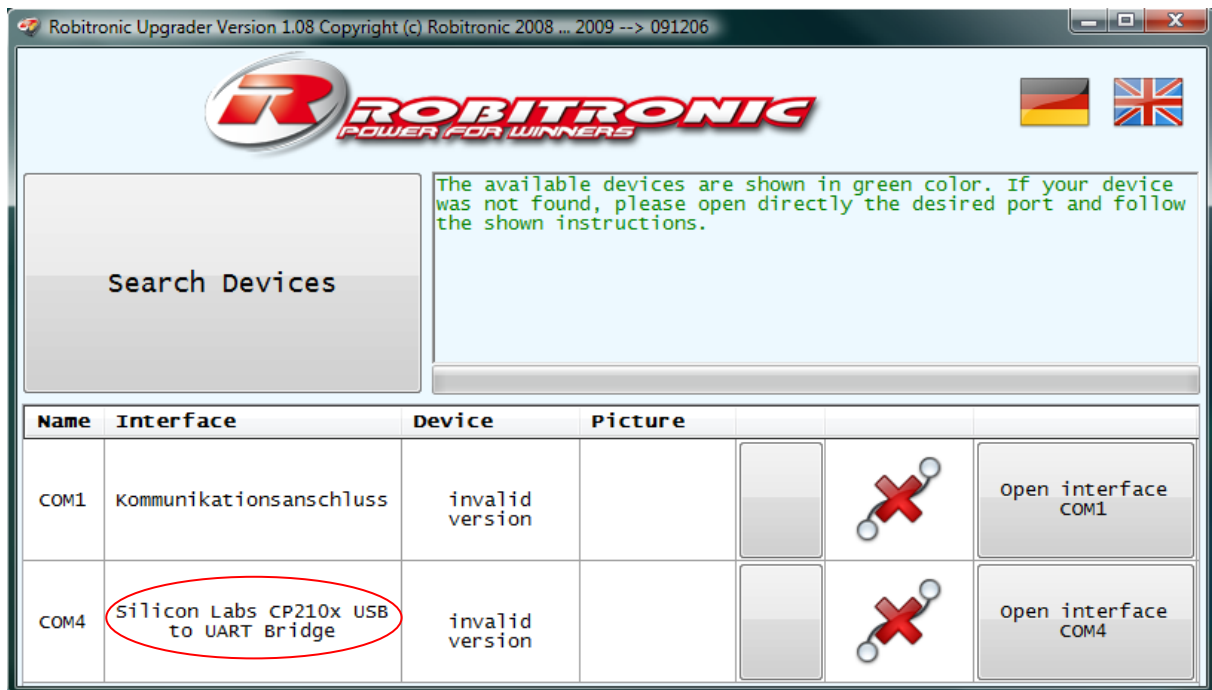
## Requirements for Overloader1 / Overloader2 updates:

For an update your charger has to contain at least version 2.xx. You will also need the USB Interface (RS153). For Overloader1 you must also have the pc interface conversion. Detailed information about the conversation you will find here: <http://www.logview.info/cms/Overloader.phtml>

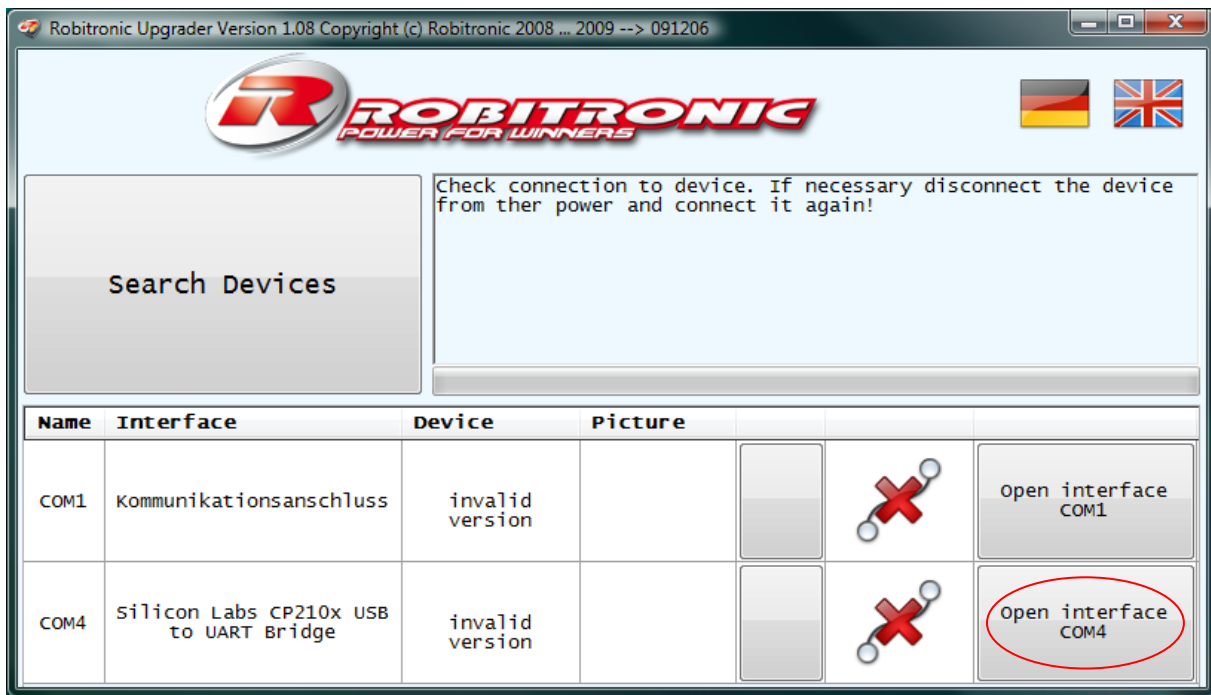
## Provisions:

Connect the USB Interface RS153 to your PC and install the delivered driver. After successful driver installation the red LED on the interface has to light up. After that please install the Robitronic Upgrader.

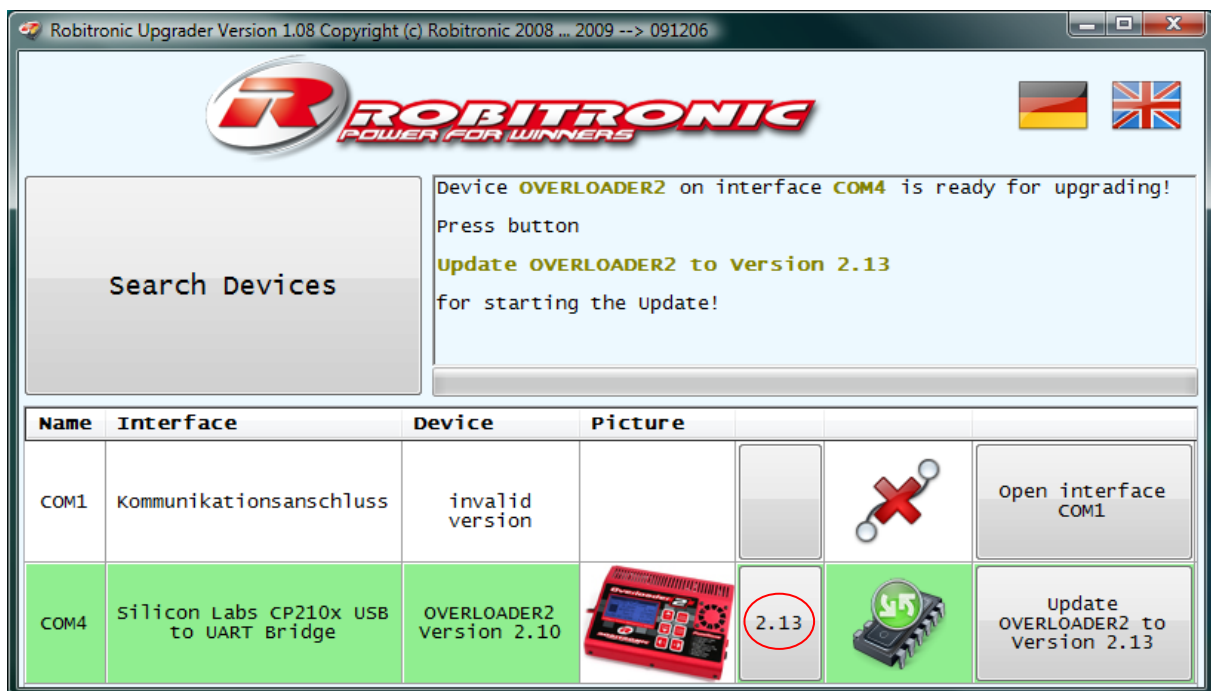
1. Connect the USB Interface RS153 to your Overloader and connect the charger to a power supply. Now please start the Upgrader, it will scan automatically for connected Robitronic devices.



2. If your device is not found (automatic detection is not included in all software versions so far) look for "Silicon Labs CP210x USB to UART Bridge" in the Interface column. Go to the right in this row and klick "Open interface COMx".



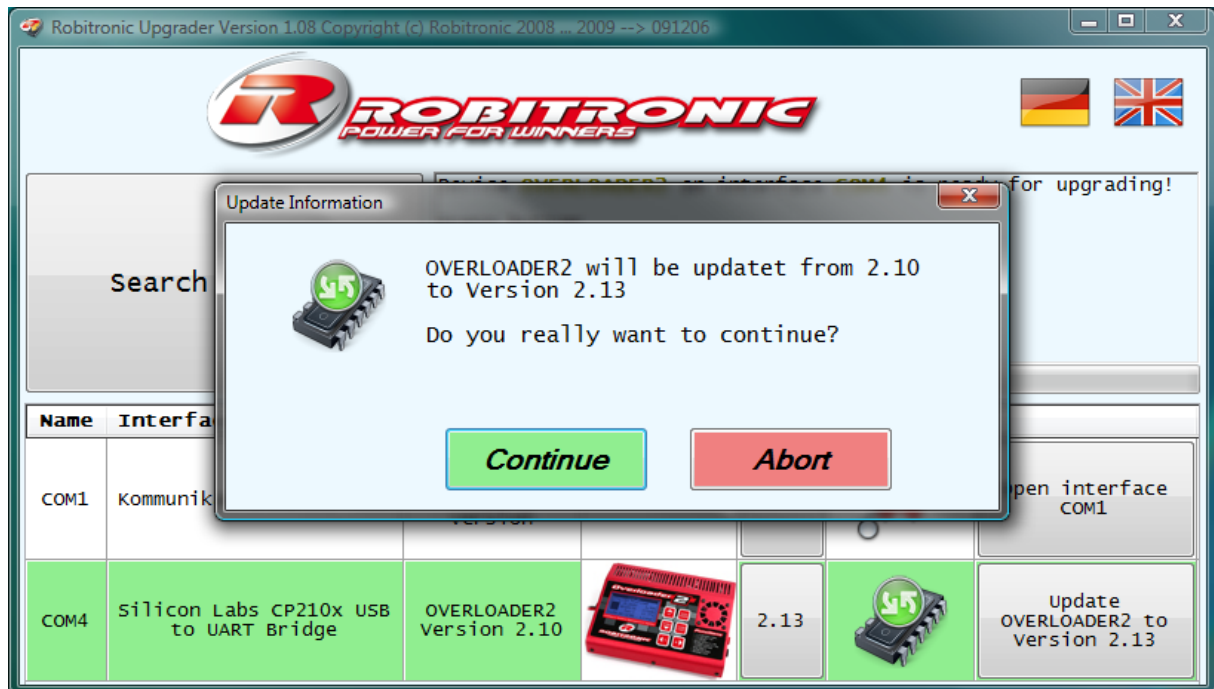
3. Disconnect your device now for 5 seconds from the power supply and connect it again (the USB interface has to be connected). The Upgrader should now have found your device. You can see now which software version your device contains and which version is available.



- With a click on the button with the new software version (red marked) a window with all available software versions and the changelog pops up.

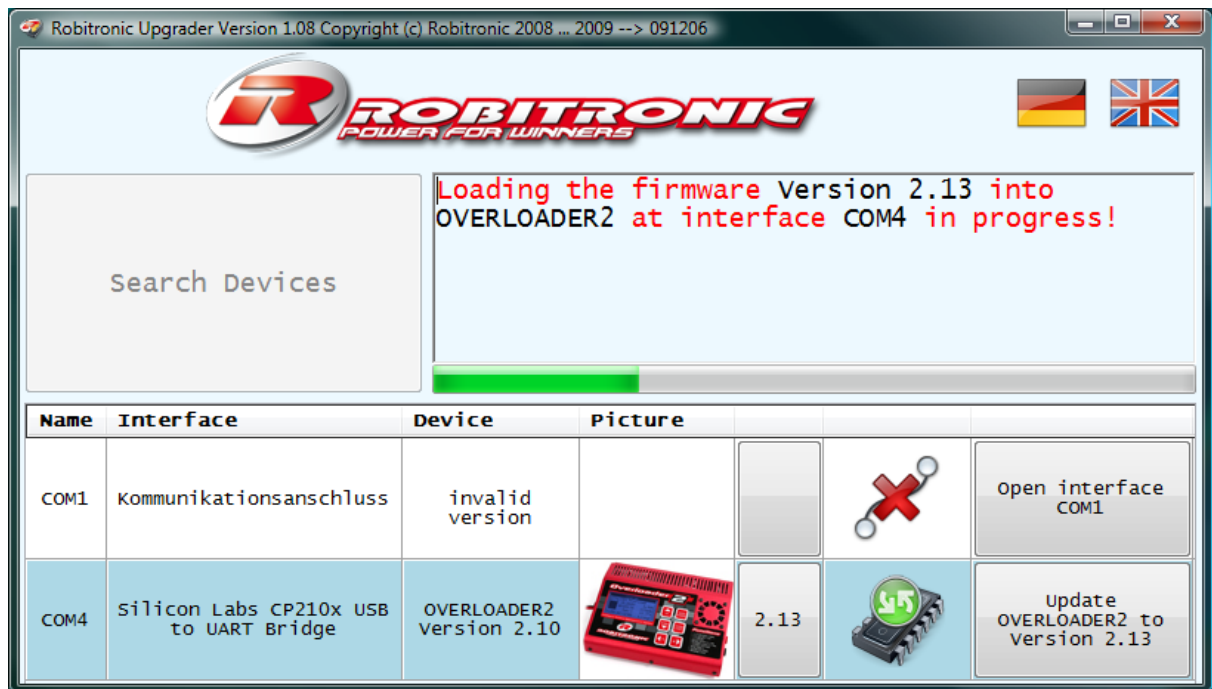


- On the left you can choose the version you want (if more than one is available). With “Continue” you can close this window again and go back to the main window. With a click on the Update button and then on “Continue” you will start the update procedure.



- Please wait now for the update procedure to complete. This is dependent on your device and can take up to 3 minutes. Never disconnect your device during the update procedure. If the

connection gets lost unexpectedly please reconnect the device. The Upgrader will automatically continue the update procedure.



- After a successful update the device restarts itself. You can now disconnect it and close the Upgrader.

